



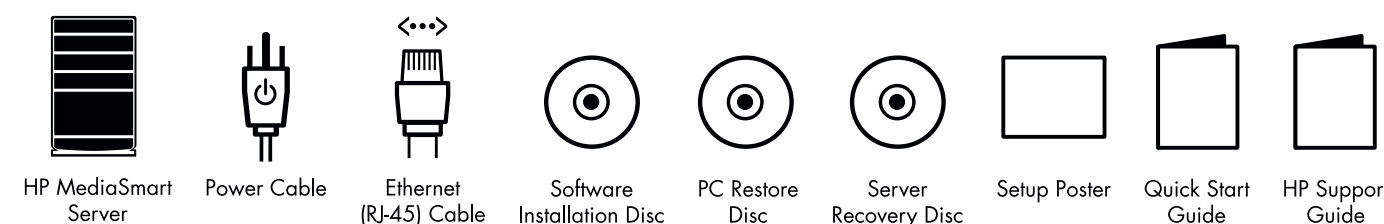
HP MediaSmart Server



Setup Poster

English

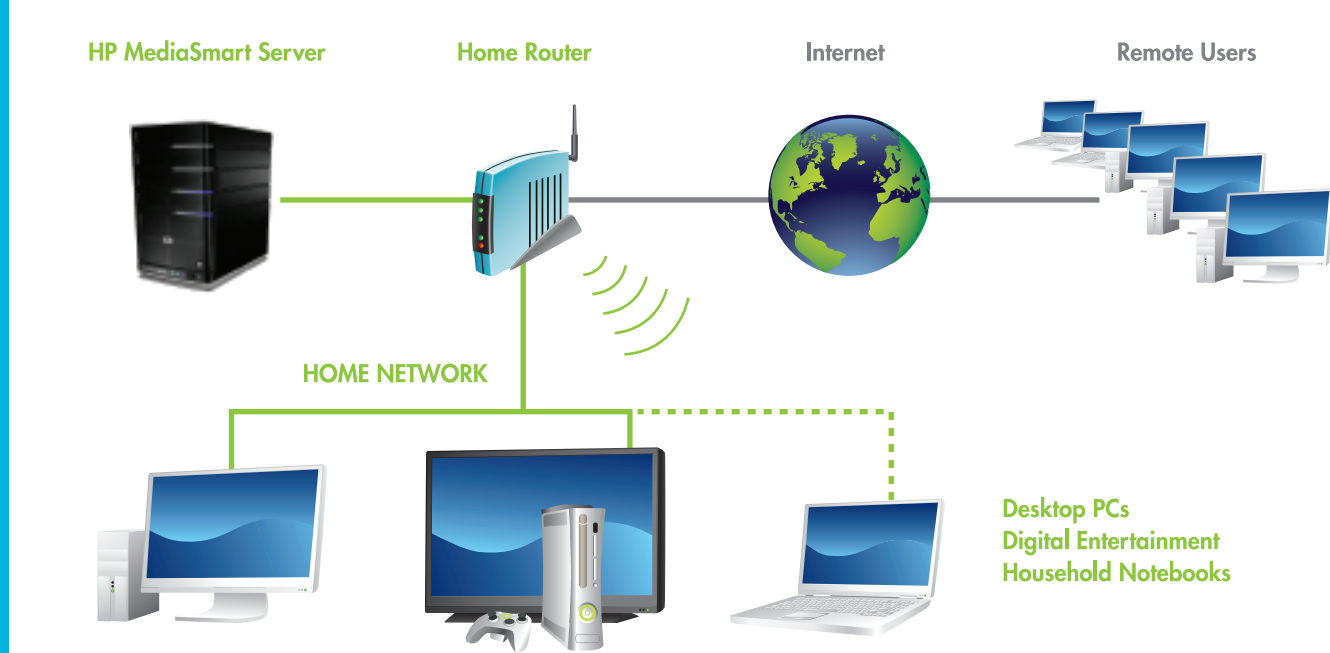
WHAT'S IN THE BOX



EXAMPLE OF A HOME NETWORK

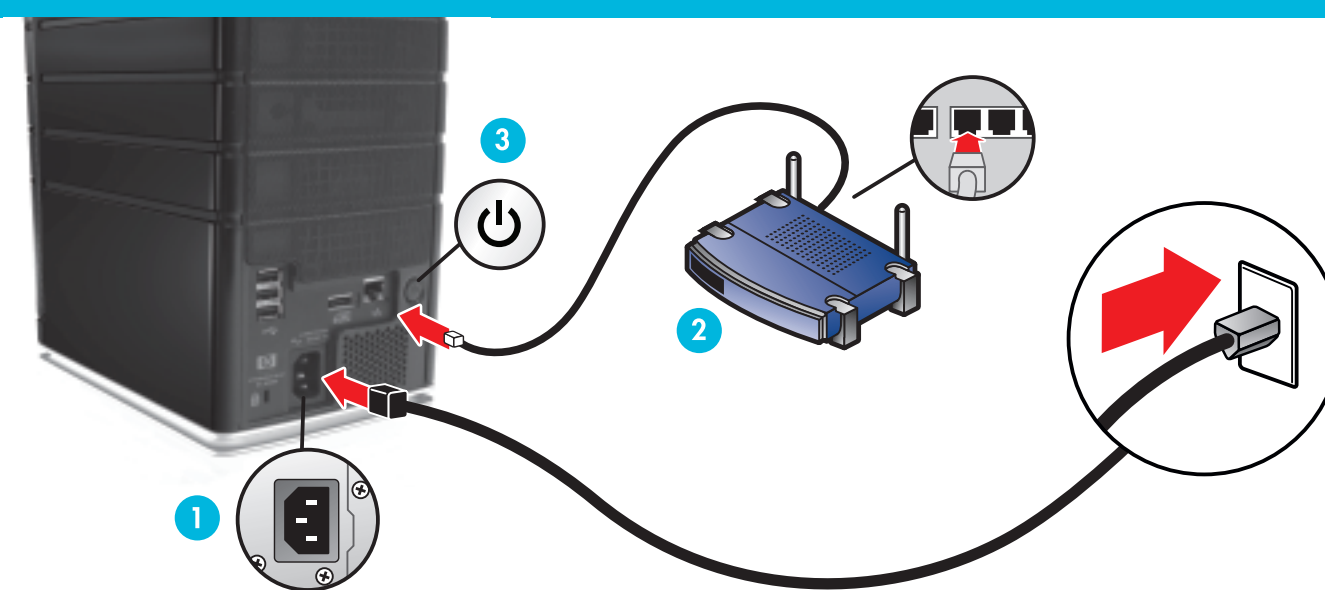
The HP MediaSmart Server in a typical home network environment. This example shows a broadband router connecting the following:

- HP MediaSmart Server
- Laptop with a wireless adapter
- TV connected to a network-enabled media streaming device, such as an Xbox 360
- Desktop computer
- Remote users through an Internet broadband modem



CAUTION If you have wireless functionality on your network, be sure to enable your router's security settings to protect your network. See the documentation that came with your router.

1 SET-UP YOUR HP MEDIASMART SERVER



IMPORTANT
Do not attach USB devices to the HP MediaSmart Server during initial setup.

Consult page 8 of the Installation and Troubleshooting Guide for more information.

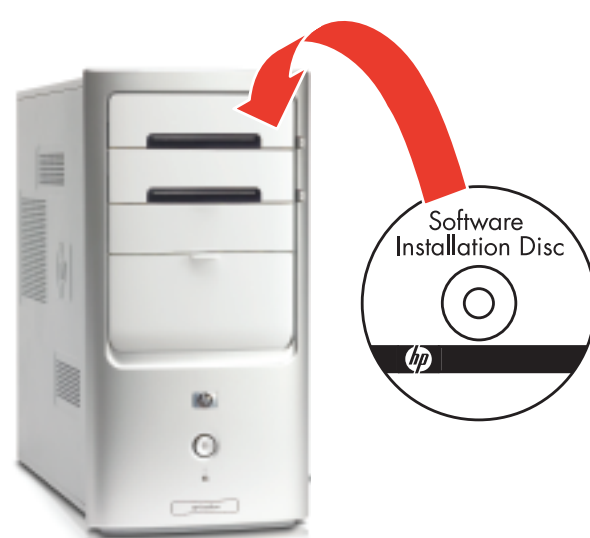
- 1 Plug the power cord into the server and the other end into an electrical outlet.
- 2 Connect one end of the Ethernet cable to the server and the other end to an available Ethernet port on your router.
- 3 Press the Power button on the back of the server.

Note: Firewall and anti-virus software installed on your computer may prevent the computer from locating the HP MediaSmart Server on your network. To ensure open communication between the computer and the server, complete the following steps prior to running the Software Installation Disc:

- Open the firewall and anti-virus software and update the trusted programs list
- Verify that both applications are set to "Learn" new programs
- Install any updates for the firewall or anti-virus software

The server will take approximately 60 seconds to start up. The LED indicator lights blink and change color throughout the startup process. Wait for all of the server LED lights to be solid before proceeding with the software installation.

2 INSTALL THE SOFTWARE ON YOUR FIRST COMPUTER



You must have administrative privileges on your home computer to install the software. Complete the following instructions to view, add or change user account settings.

- WINDOWS VISTA
- Click **Start**, **Control Panel**, and then **User Accounts and Family Safety**
- WINDOWS XP
- Click **Start**, **Control Panel**, and then double-click **User Accounts**

Complete the software installation:

- 1 Insert the Software Installation Disc into a computer that is connected to your network.
- 2 Follow the instructions on each installation page.
- 3 The Software Installation Disc will first install the HP MediaSmart Server software and then install the Microsoft Home Server Connector Software.
- 4 Once the installation is complete, you will be prompted to enter your Windows Home Server password and logon. The software Assistant displays at the bottom of the Windows Home Server to guide you through the initial setup of the HP MediaSmart Server.

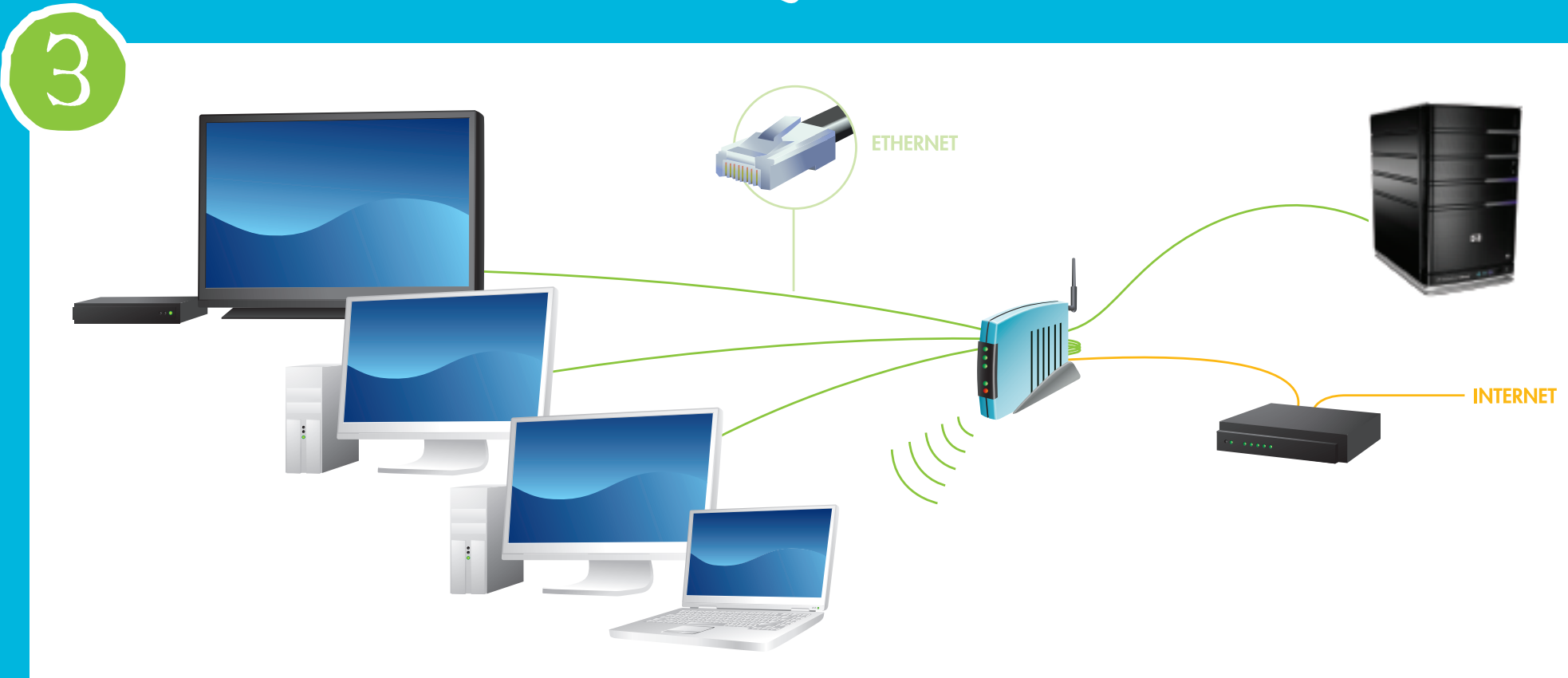
IMPORTANT
If required, HP Update, Windows Installer 3.1, and .NET 2.0 or later software may be installed. These installations may restart your computer and take several minutes.

Note: Computers running Windows Vista may display User Account Control messages, such as "A program needs your permission to Continue" during the installation. Click **Continue** to install the software.

CONGRATULATIONS!

You are ready to Start Using Your Server.

LET'S GET STARTED...



Some HP MediaSmart Server features, such as backups and shared folders, are pre-configured and ready to go as soon as the first software installation is complete. Other features require some set up before you can use them.

PC Backup

During the software installation, your first home computer is automatically added to the list of computers that will be backed up by the HP MediaSmart Server each night.

Run the Software Installation Disc on additional home computers to enable them to communicate with the server and to add them to nightly backups.

Note: The first backup of each home computer can take several hours depending on the amount of information to backup. Subsequent backups are much faster since only new or changed files are included. It is recommended that the first computer backup should be done through a wired connection.

Consult page 19 of the Installation and Troubleshooting Guide for more information.

Shared Folders and Media Sharing

The HP MediaSmart Server comes pre-configured with shared folders. You can immediately start copying photos, music, videos and other files from your computer to shared folders on the HP MediaSmart Server.

- 1 At the computer, double-click the HP MediaSmart Server desktop icon.
- 2 Copy Photos, Music, or Videos to the appropriate shared folder.

Note: You can turn on digital media streaming for the Photos, Music, or Videos shared folders. At the computer:

- Double-click the **Windows Home Server icon** in the task tray and log on.
- Click **Settings** in the upper right corner.
- Click **Media Sharing** in the left menu
- Click **On** for each folder that you want to stream from.

Set up Additional Features

Features such as HP Software Update, User Accounts, Remote Access, Photo Webshare, and Media Sharing require some setup.

- 1 At the computer, double-click the **Windows Home Server icon** in the task tray and log on. The **MediaSmart Server tab** should be active.
- 2 Follow the instructions in the software Assistant at the bottom of the page.

A green check mark appears for each completed step. Once all of the steps are complete, the software Assistant link at the top of the page turns green.

For additional information on setting up the server, see the back side of this poster.



CAUTION

When adding a hard disk drive to the server storage, the hard disk drive will be formatted. Make sure to back up any important files that are on the hard disk drive before adding it to the server storage. Formatting a hard disk drive deletes all files on the hard disk drive.

Adding an Internal Hard Disk Drive to your HP MediaSmart Server

There are two parts to adding an internal hard disk drive to your HP MediaSmart Server:

Step 1: Add the hard disk drive to an expansion bay

- Open the door on the front of the server and gently remove the lowest empty hard disk drive tray.
- Fold down the flap near the back of the hard disk drive tray.
- Insert the new hard disk drive into the left side of the tray, making sure that the pins go into the hard disk drive's mounting holes.
- Flex the right side tray rail, and then insert the pins into the hard drive's mounting holes.
- Insert the hard disk drive tray into the server, snap it in place, and close the server door.

Step 2: You must initialize the hard disk drive and add it to the total server storage

Important: If you add a hard disk drive to server storage, you commit that it will be part of your total server storage. You should not disconnect the hard disk drive to use it for other purposes. If you want to use the hard disk drive for other purposes, you must first select the hard drive from the **Server Storage** tab described below and click **Remove**.

- On your computer, double-click the **Windows Home Server icon** in the task tray and log on.
- Click the **Server Storage** tab.
- Select the newly installed hard drive and click **Add**.
- Follow the instructions in the **Add a Hard Drive Wizard**.