

# Domoticz - RFXtrx Quick Start Guide



[www.rfxcom.com](http://www.rfxcom.com)

# 1. Table of Contents

1.	Table of Contents .....	2
2.	Introduction.....	2
3.	Back-up the RFXCOM Domoticz SD card.....	3
4.	Minimum requirement.....	3
4.1.	For Linux on a Raspberry PI.....	3
4.2.	For Windows .....	3
4.3.	For other systems check the domoticz web site .....	3
5.	Installation .....	4
5.1.	Installation on Raspberry PI .....	4
5.2.	Installation on Windows.....	4
6.	To stop Domoticz.....	5
7.	Use SSH to access the Raspberry PI Linux system.....	5
8.	Links.....	6
9.	Buy Raspberry PI Model B at:.....	6
10.	Revision history .....	7


## 2. Introduction

Domoticz is a Home Automation System that lets you monitor and control various devices like: various sensors/meters like Temperature, Humidity, Wind, Rain, UV, Power usage , Gas usage, Water usage, Lights, Switches and many more.  
Notifications/Alerts can be sent to any mobile device.

This system is designed to operate in various operating systems. The user-interface is a scalable HTML5 web frontend, and is automatically adapted for Desktop and Mobile Devices. Compatible with all browsers. Note for Internet explorer users: You need version 10+.

RFXCOM has prepared a SD card for the Raspberry PI to make the startup of domoticz on the Raspberry PI very simple. This SD card is only delivered as set with the RFXtrx433.

If you like domoticz it is appreciated to make a Paypal donation to the domoticz developer to enable him to extend domoticz and invest in new sensors and devices.

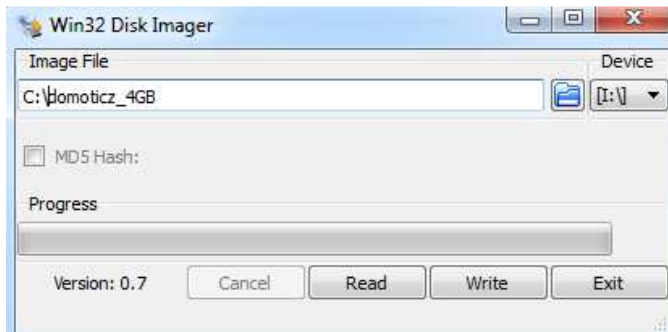
The  button is available on this page <http://www.domoticz.com/>

### 3. Back-up the RFXCOM Domoticz SD card

It is advised to make a back-up copy of the RFXCOM Domoticz SD card. This can be done on a Windows system using Win32 Disk Imager.

Win32diskimager can be downloaded at <https://sourceforge.net/projects/win32diskimager/>

- Start win32diskimager
- Select the drive where the SD card is (in the example below "I")
- Type the name for the back-up file, for example C:\domoticz\_4GB
- Click the  button. (note: Write will destroy the SD card!!)
- If win32dikimager reports ready you can remove the SD card.



If you ever need to create a new domoticz 4GB SD card you insert a 4GB SD card in your Windows system, select the C:\domoticz\_4GB.img file and click

### 4. Minimum requirement

#### 4.1. For Linux on a Raspberry Pi

- Raspberry PI Model B
- RFXtrx433 with the Domoticz 4GB SD card (order nr 13103)
- A good low noise (5 Volt 5Watt) Power Supply
- LAN cable

#### 4.2. For Windows

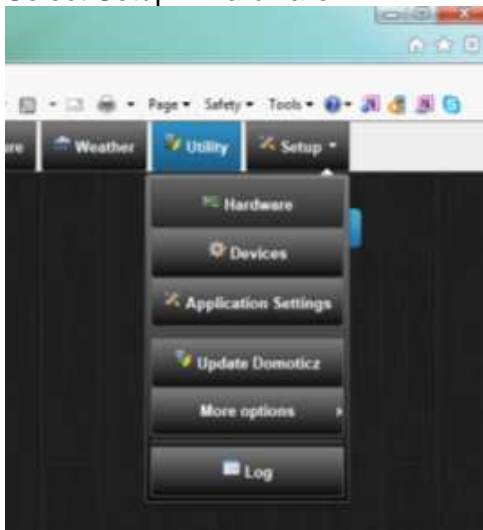
- Windows system
- RFXtrx433 (order nr 12103)

#### 4.3. For other systems check the domoticz web site

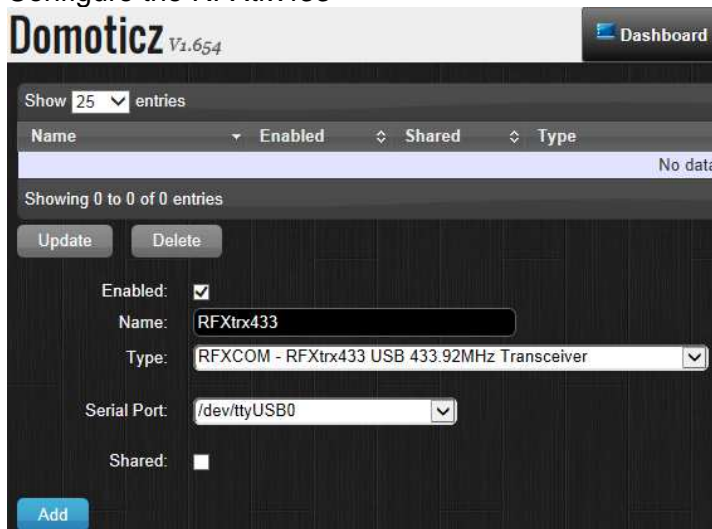
## 5. Installation

### 5.1. Installation on Raspberry PI

- Make a back-up of the RFXCOM Domoticz SD card
- Insert the RFXCOM SD card in the Raspberry PI.
- Connect the RFXtrx USB cable.
- Connect the LAN cable.
- Connect the power, wait about 30 seconds.
- Start a browser and go to <http://raspberrypi:8080>
- Select Setup – Hardware



- Configure the RFXtrx433



You are now ready to configure sensors and devices.

For more details see <http://domoticz.sourceforge.net/DomoticzManual.pdf>

### 5.2. Installation on Windows

- Connect the RFXtrx USB cable
- Download domoticz at <https://sourceforge.net/projects/domoticz/files/>
- Unzip the downloaded file and run **DomoticzSetup.exe**
- Start the browser and go to <http://localhost:8080>
- Select Setup – Hardware
- Configure the RFXtrx433 at the selected COM port

## 6. To stop Domoticz

It is preferred to stop Domoticz before you remove the power from the Raspberry PI.

To stop Domoticz in the browser:

[http://raspberrypi:8080/json.htm?type=command&param=system\\_shutdown](http://raspberrypi:8080/json.htm?type=command&param=system_shutdown)

This line will be displayed in the browser:

```
{ "status" : "OK", "title" : "SystemShutdown" }
```

To stop Domoticz in PuTTY:

```
sudo service domoticz.sh stop
```

```
sudo shutdown -h now
```

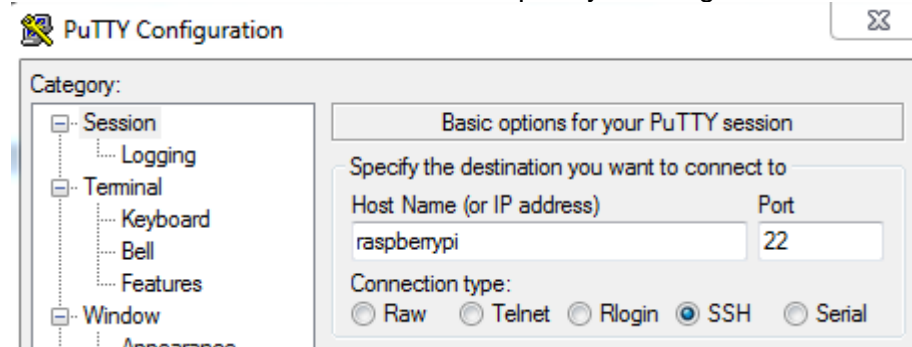
You can remove the power from the Raspberry PI if all LED's are OFF (except the red LED).

## 7. Use SSH to access the Raspberry PI Linux system

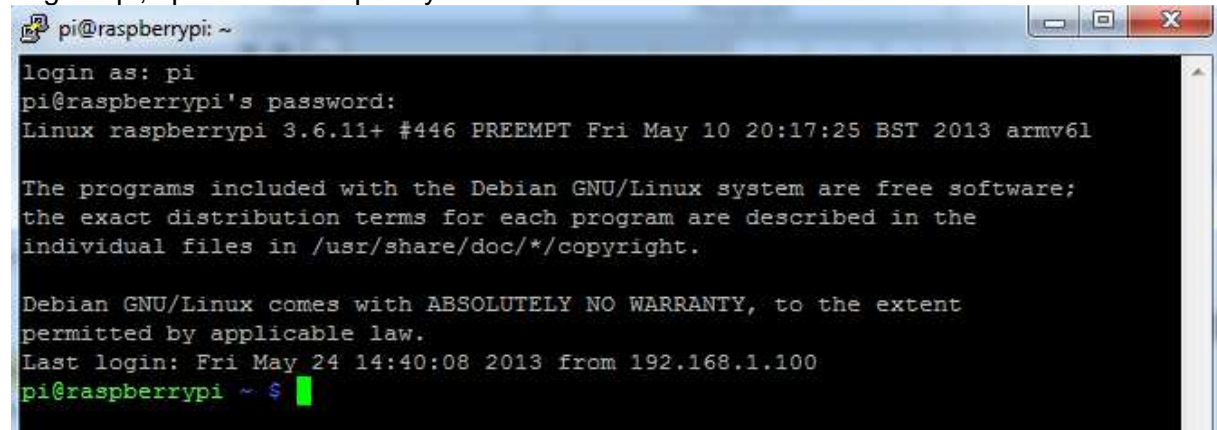
### For advanced users only.

You can use PuTTY to access the Raspberry PI.

Download PuTTY and connect the Raspberry PI using the Host name raspberrypi on port 22



Login = pi, password=raspberry



## 8. Links

Domoticz main site <http://www.domoticz.com/>  
Domoticz Wiki <https://sourceforge.net/p/domoticz/wiki/Home/>  
Domoticz forum <https://sourceforge.net/p/domoticz/discussion/>  
Domoticz manual <http://domoticz.sourceforge.net/DomoticzManual.pdf>

PuTTY download <http://www.chiark.greenend.org.uk/~sgtatham/putty/download.html>  
Win32 Disk Imager <https://sourceforge.net/projects/win32diskimager/>

## 9. Buy Raspberry PI Model B at:

France

<http://www.planete-domotique.com/electronique/raspberry-pi/raspberry-pi-modele-b-ethernet-512mo.html>  
[http://www.domadoo.fr/produit,3356,1,RASPBERRY--Ordinateur-monocarte-Raspberry-Pi-Type-B-\(512Mo\).htm](http://www.domadoo.fr/produit,3356,1,RASPBERRY--Ordinateur-monocarte-Raspberry-Pi-Type-B-(512Mo).htm)

Germany

<http://www.hans-hats.de/starterset-intertechnohome-easy-hausautomation-plug-play-raspberrymoticz-p-7678.html?osC>

Sweden

<http://www.lohelectronics.se/raspberry-pi-model-b-v2-512mb-ram-inkl-strom-p-887.html>  
<https://www.m.nu/dator-raspberry-pi-model-b-512mb-ram-p-567.html>

Farnell

[http://uk.farnell.com/jsp/bspoke/bspoke7.jsp?bspokepage=farnell/en\\_UK/promotions/rasp-pi-accessories.jsp](http://uk.farnell.com/jsp/bspoke/bspoke7.jsp?bspokepage=farnell/en_UK/promotions/rasp-pi-accessories.jsp)

RS

<http://raspberrypi.rsdelivers.com/default.aspx?cl=1>  
<http://uk.rs-online.com/web/generalDisplay.html?id=raspberrypi>

## **10. Revision history**

Version 0.0 – May 24, 2013

Initial version.

Version 0.1 – June 17, 2013

Links updated.