

# RFXtrx

## USB RF transceiver

### User guide



[www.rfxcom.com](http://www.rfxcom.com)

# 1. Table of Contents

1.	Table of Contents.....	2
2.	RFXtrx general information.....	3
2.1.	RFXtrx315 supported protocols.....	3
2.1.1.	RFXtrx315 configured for 310MHz.....	3
2.1.2.	RFXtrx315 configured for 315MHz.....	3
2.2.	RFXrec433, RFXtrx433, RFXtrx433E supported protocols.....	4
2.2.1.	By function.....	4
2.2.2.	Alphabetic list.....	7
2.3.	undec on.....	10
2.4.	Sensitivity influenced by enabled protocols.....	12
2.5.	RF range reduction.....	13
2.6.	Home Automation software.....	13
2.7.	Dimensions.....	13
2.8.	Electrical.....	13
2.9.	Environmental conditions.....	13
3.	Install the USB driver.....	14
4.	Run RFXflash on Linux under Mono.....	14
5.	RFXmngtr test program.....	15
5.1.	Receiver.....	16
5.2.	Transmitter.....	17
6.	Flash update of the RFXtrx.....	18
6.1.	Update firmware in the RFXtrx.....	18
6.2.	Update firmware in the RFXtrx step by step.....	19
7.	RFXtrx433 special device codes.....	21
7.1.	Remote commands.....	21
7.1.1.	X10 RF Remote.....	21
7.1.2.	ATI Remote Wonder.....	22
7.1.3.	ATI Remote Wonder Plus.....	23
7.1.4.	Medion Remote.....	24
7.2.	Harrison address conversion to switch settings.....	25
7.3.	Flamingo, AB400, IMPULS, Sartano, Brennenstuhl switch settings.....	26
7.4.	Energenie 5-gang 429.950.....	27
7.5.	Phenix, IDK YC-4000S switch settings.....	28
7.6.	HE105 switch settings.....	29
7.7.	MDREMOTE.....	30
7.8.	Aoke relay.....	30
8.	Blyss commands.....	31
9.	How to find the dx.com RGB LED strip driver ID.....	31
10.	How to find the dx.com RGB LED strip driver ID (rev. 2).....	31
11.	How to find the Eurodomest ID.....	31
12.	Somfy RTS.....	32
13.	Transmit undecoded ARC commands.....	33
14.	Known Lighting4 devices.....	34
14.1.	Proluxx projection screen.....	34
14.2.	Kingpin (KP100) projection screen.....	34
14.3.	Mercury remote control mains sockets.....	34
14.4.	Conrad 034911 sockets.....	34
15.	EC Declaration of Conformity.....	35
16.	Warning:.....	36
17.	License.....	36
18.	Copyright notice.....	36
19.	Revision history.....	37

## 2. RFXtrx general information

The RFXtrx transceivers and RFXrec receivers are communicating over an USB port with the Home Automation application. The RFXtrx/rec is powered by the USB port.

At startup the RFXtrx enters for 2 seconds the boot loader (red LED is on) and after this it starts the receive/transmit firmware. If valid (decode-able) packets are received the yellow LED will blink.

The RFXtrx315 and the RFXrec433 are mainly for use in the US. The RFXtrx315 can receive US X10 lighting and security sensors **or** US Visonic PowerCode sensors at 315MHz.

The RFXrec433 can receive weather sensors of different brands at 433.92MHz.

The RFXtrx433 is a transceiver (transmitter+receiver) and can receive and control a large number of sensors and other devices.

The RFXtrx433E is an extended RFXtrx433 transceiver.

Note: the listed protocols and brands are supported!

### 2.1. RFXtrx315 supported protocols

#### 2.1.1. RFXtrx315 configured for 310MHz

Protocol	Enable	receive	transmit
US X10 lighting	X10	Y	Y
US X10 security	X10	Y	Y

#### 2.1.2. RFXtrx315 configured for 315MHz

Protocol	Enable	receive	transmit
Aoke relay - <a href="http://www.aliexpress.com/store/product/whose-sale-prices-DC12V10A-Learning-Code-Wireless-Remote-Control-Switch-System-1-Receiver-and-1-Transmitter/1211856_1774391429.html">http://www.aliexpress.com/store/product/whose-sale-prices-DC12V10A-Learning-Code-Wireless-Remote-Control-Switch-System-1-Receiver-and-1-Transmitter/1211856_1774391429.html</a>	-	-	Y
Visonic CodeSecure	-	planned	-
Visonic PowerCode	Visonic	Y	Y

## 2.2. RFXrec433, RFXtrx433, RFXtrx433E supported protocols

### 2.2.1. By function

<b>Curtains, shades, projection screen, awning, gate openers</b>
A-OK blind motors (RF01,AC114,AC123 controlled) - <a href="http://www.motorisationplus.com/">http://www.motorisationplus.com/</a>
BOFU blind motors - <a href="http://www.bofumotor.com/">http://www.bofumotor.com/</a>
BTX blind motors - <a href="http://www.btxinc.com">http://www.btxinc.com</a>
Brel blind motors - <a href="http://www.brel-motors.nl/webshop/motoren/">http://www.brel-motors.nl/webshop/motoren/</a>
Chamberlain CS4330CN <a href="http://www.chamberlain24.de/epages/es122868.sf/en_GB/?ObjectPath=/Shops/es122868/Products/RA4336">http://www.chamberlain24.de/epages/es122868.sf/en_GB/?ObjectPath=/Shops/es122868/Products/RA4336</a>
Dolat DLM-1 controlled motors - <a href="http://www.dolat.com.cn/product1.asp?id=538">http://www.dolat.com.cn/product1.asp?id=538</a>
Dooya blind motors
Ematronic - <a href="http://www.ematronic.com/moteurs-volet-roulant/">http://www.ematronic.com/moteurs-volet-roulant/</a>
ESMO blind motors
Forest blind/curtain motors - <a href="http://www.forestgroup.nl/index_nl.html">http://www.forestgroup.nl/index_nl.html</a>
Harrison curtain - <a href="http://www.harrison.nl/home2.htm">http://www.harrison.nl/home2.htm</a>
Hasta blind motors - <a href="http://www.hasta.se/">http://www.hasta.se/</a>
JVS screens - <a href="http://www.screen-discount.nl/">http://www.screen-discount.nl/</a>
Kingpin KP100 projection screen
Louvolite one touch motorised blinds
Luxaflex (RFXtrx433E only) - <a href="http://www.luxaflex.se/produkter/luxaflex/rullgardiner/">http://www.luxaflex.se/produkter/luxaflex/rullgardiner/</a>
Media Mount Projector screen
Proluxx projection screen
RAEX blind motor (YR1326 controlled) - <a href="http://www.beckermotors.co.uk/">http://www.beckermotors.co.uk/</a>
Simu (RFXtrx433E only) - <a href="http://www.simu.com/">http://www.simu.com/</a>
Somfy (RFXtrx433E only) - <a href="http://www.somfy.co.uk/">http://www.somfy.co.uk/</a>
Sunperry blind motors
RohrMotor24 RMF blind motors - <a href="http://www.rohrmotor24.eu/rohrmotor24">http://www.rohrmotor24.eu/rohrmotor24</a>
RollerTrol blind motors - <a href="http://rollertrol.com/">http://rollertrol.com/</a>
YOODA blind motors - <a href="http://www.sukcesgroup.pl">http://www.sukcesgroup.pl</a>

<b>Temperature, humidity, weather sensors</b>
Alecto - WS1200, WS1700, WS3500, WS4500
Auriol - H13726
Cresta
Digimax
Hama - EWS1500
Hideki weather sensors
Honeywell - TF-ATS34C
La Crosse
Lexibook - SM883
Maverick ET-732 BBQ/Smoke temperature
Meade - TS33F-M, TS34C-M <a href="http://www.meade.com/products/weatherstations/sensors.html">http://www.meade.com/products/weatherstations/sensors.html</a>
Meteoscan - W155, W160
NEXUS - I008T
mi.sol WH2 <a href="http://www.ebay.com/itm/Transmitter-for-Wireless-Weather-Station-wireless-temperature-sensor-/121664060899">http://www.ebay.com/itm/Transmitter-for-Wireless-Weather-Station-wireless-temperature-sensor-/121664060899</a>
Opus XT300 /Imagintronix Soil sensor <a href="http://www.plantcaretools.com/en/webshop/wireless-moisture-sensor-en-detail">http://www.plantcaretools.com/en/webshop/wireless-moisture-sensor-en-detail</a> <a href="http://www.ebay.co.uk/itm/Wireless-Soil-Moisture-Sensor-/251380900939?pt=UK_Home_Garden_Garden_Plants_Fertiliser_CV&amp;hash=item3a8778244b">http://www.ebay.co.uk/itm/Wireless-Soil-Moisture-Sensor-/251380900939?pt=UK_Home_Garden_Garden_Plants_Fertiliser_CV&amp;hash=item3a8778244b</a>
Oregon Scientific / Huger
Prego P-8426 <a href="http://www.sunmarket.fi/tuote.asp?TID=11990">http://www.sunmarket.fi/tuote.asp?TID=11990</a>
Proove -TSS320 & TSS330 fridge/freezer thermometer & outdoor sensors 311346,311501
RFXSensor
RUBiCSON - stektermometer 48659, 48695
Sunvic TLX1206
Sunvic TLX7506

TechnoLine/Proficell	<a href="http://www.elv.de/output/controller.aspx?cid=74&amp;detail=10&amp;detail2=27621">http://www.elv.de/output/controller.aspx?cid=74&amp;detail=10&amp;detail2=27621</a> - TX95-TH
TFA	
UPM/Esic (very short receiving range)	
Ventus – WS155	
Viking	
WT0122 pool thermometer	
Xiron –EN6	

<b>Appliance modules, dimmers, relays, LED controllers</b>	
ANSLUT (learning mode)	
Aoke relay	<a href="http://www.aliexpress.com/store/product/whose-sale-prices-DC12V10A-Learning-Code-Wireless-Remote-Control-Switch-System-1-Receiver-and-1-Transmitter/1211856_1774391429.html">http://www.aliexpress.com/store/product/whose-sale-prices-DC12V10A-Learning-Code-Wireless-Remote-Control-Switch-System-1-Receiver-and-1-Transmitter/1211856_1774391429.html</a>
ByeByeStandBy	
Blyss lighting	– <a href="http://www.castorama.fr/store/Prise-telecommandee-et-telecommande-BLYSS---Interieur-prod4470026.html">http://www.castorama.fr/store/Prise-telecommandee-et-telecommande-BLYSS---Interieur-prod4470026.html</a>
Brennenstuhl	
Chacon	– <a href="http://www.chacon.be/">http://www.chacon.be/</a>
CoCo	– <a href="http://www.coco-technology.com/en/home/">http://www.coco-technology.com/en/home/</a>
Conrad RSL2	– <a href="http://www.conrad.com/ce/en/product/640466/FUNK-STECKDOSENSCHALTER-RSLR2">http://www.conrad.com/ce/en/product/640466/FUNK-STECKDOSENSCHALTER-RSLR2</a>
DI.O	– <a href="http://www.di-o.be/">http://www.di-o.be/</a>
DomiaLite	
Ebode	
ELRO AB400/AB600	– <a href="http://www.elro.eu/en/products/cat/home-automation/home-control1">http://www.elro.eu/en/products/cat/home-automation/home-control1</a>
Energenie ENER010 – 429.935, 5-gang 429.950	– <a href="https://energenie4u.co.uk/">https://energenie4u.co.uk/</a>
Etekcitey	– <a href="http://etekcity.com/p-300-5-pack-wireless-remote-control-outlet-switch-set-with-2-remote-controls-zap-5lx.aspx">http://etekcity.com/p-300-5-pack-wireless-remote-control-outlet-switch-set-with-2-remote-controls-zap-5lx.aspx</a>
Eurodomest NL – Action	
Everflourish EMW100	
Flamingo	
HomeEasy EU	– <a href="http://www.elro.eu/en/products/cat/home-automation/">http://www.elro.eu/en/products/cat/home-automation/</a>
HomeEasy UK (including HE105 relay)	– <a href="http://www.homeeasy.eu/">http://www.homeeasy.eu/</a>
Ikea Koppla	
Impuls – NL – Action	
Intertechno	– <a href="http://www.intertechno.at/">http://www.intertechno.at/</a>
Kambrook RF3672	– <a href="http://www.bunnings.com.au/kambrook-4-piece-indoor-powerpoint-kit-with-remote-control_p7030054">http://www.bunnings.com.au/kambrook-4-piece-indoor-powerpoint-kit-with-remote-control_p7030054</a>
KlikAanKlikUit	– <a href="http://www.klikaanklikuit.nl/home/">http://www.klikaanklikuit.nl/home/</a>
LightwaveRF	– <a href="http://www.lightwaverf.co.uk/">http://www.lightwaverf.co.uk/</a>
Livolo	– <a href="http://www.livolo-france.com/fr/">http://www.livolo-france.com/fr/</a> <a href="http://nl.aliexpress.com/w/wholesale-livolo-touch-switch.html">http://nl.aliexpress.com/w/wholesale-livolo-touch-switch.html</a>
Maplin	<a href="http://www.maplin.co.uk/p/remote-controlled-mains-socket-set-single-n78ka">http://www.maplin.co.uk/p/remote-controlled-mains-socket-set-single-n78ka</a> (use Lighting1 – COCO GDR2)
Mdremote LED dimmer	– <a href="http://www.ultraleds.co.uk">www.ultraleds.co.uk</a>
Mercury appliance modules	– <a href="http://mercury.avsl.com/product?range=ME5124">http://mercury.avsl.com/product?range=ME5124</a>
NEXA	– <a href="http://www.nexa.se/">http://www.nexa.se/</a>
OTIO	
Phenix	
Philips SBC SP370 series	
Proove	– <a href="http://proove.se/">http://proove.se/</a>
RGB LED strip driver dx.com	– <a href="http://www.dx.com/">http://www.dx.com/</a> order nbr: 130913 (new TRC02 not supported) , 67412
RisingSun	
Sartano	
Siemens (UK)	
Waveman	
X10 RTS10 / RFS10	
X10 lighting	
Xdom	

Door/window, smoke and other security sensors
Aidebao security
Alecto – SA30 smoke detector
Atlantic security
Chacon KD101 smoke detector
Flamingo KD101 smoke detector
Meiantech security
NEXA KD101 smoke detector
Oregon MSR939 <a href="https://www.redealer.de/multimedia/home-living/wetterstationen/bewegungssensor-msr939/a-200667/">https://www.redealer.de/multimedia/home-living/wetterstationen/bewegungssensor-msr939/a-200667/</a>
Visonic CodeSecure
Visonic PowerCode
X10 security

Remotes
ATI Remote Wonder
ATI Remote Wonder Plus
ATI Remote Wonder II
X10 PC Remote

Chimes
1byOne Easy Chime
Byron SX chime - <a href="http://www.chbyron.eu/Byron/ByronSXRange/68/89/">http://www.chbyron.eu/Byron/ByronSXRange/68/89/</a>
Byron MP001
Chacon
Envivo – ENV1348
HomeEasy
KlikAanKlikUit
SelectPlus200689101 & SelectPlus200689103 (Action NL)

Power, gas water metering
cent-a-meter
Electrisave
OWL CM113, CM180, CM119, CM160, CM180, CM180i - <a href="http://www.theowl.com/">http://www.theowl.com/</a>
Revolt NC5461 - <a href="http://www.pearl.de/a-NC5462-5452.shtml">http://www.pearl.de/a-NC5462-5452.shtml</a>
RFXMeter

Specials
DEA receivers <a href="http://www.deasystem.com/en/accessory/7/receivers">http://www.deasystem.com/en/accessory/7/receivers</a> (unencrypted only)
Mertik Maxitrol – Fire Place controllers
Oregon Scientific Body weight scales – BWR101, BWR102, GR101
Prego P-8426 – sauna temperature sensor <a href="http://www.sunmarket.fi/tuote.asp?TID=11990">http://www.sunmarket.fi/tuote.asp?TID=11990</a>
Smartwares radiator valve <a href="http://www.homewizard.nl/smartwares-draadloze-radiatorkraan.html">http://www.homewizard.nl/smartwares-draadloze-radiatorkraan.html</a>
Siemens SF01 - LF959RA50/LF259RB50/LF959RB50 extractor hood
X10 Ninja/Robocam – camera motor

## 2.2.2. Alphabetic list

Important notes:

- Ext firmware will not operate in the RFXtrx433.
- RFXrec firmware is equal to RFXtrx433 – Type1 firmware without the transmit functions.
- Protocol enabling is only necessary for receive. Transmit protocols are always enabled.

Protocol	Type 1	Type 2	Ext	Protocol	rec	xmit
1Byone Easy Chime	-	Y	Y	ByronSX	Y	Y
A-OK blind motors RF01,AC114,AC123 - <a href="http://www.motorisationplus.com/">http://www.motorisationplus.com/</a>	Y	Y	-	BlindsT1	Y	Y
Aidebao security	Y	Y	Y	Meiantech	Y	Y
Alecto – SA30 smoke detector	Y	Y	Y	Oregon	Y	Y
Alecto – WS1200	Y	Y	Y	LaCrosse	Y	-
Alecto – WS1700 and compatibles, WS3500, WS4500	-	-	Y	Rubicson	Y	-
ANSLUT (learning mode)	Y	Y	Y	AC	Y	Y
Aoke relay - <a href="http://www.aliexpress.com/store/product/whose-sale-prices-DC12V10A-Learning-Code-Wireless-Remote-Control-Switch-System-1-Receiver-and-1-Transmitter/1211856_1774391429.html">http://www.aliexpress.com/store/product/whose-sale-prices-DC12V10A-Learning-Code-Wireless-Remote-Control-Switch-System-1-Receiver-and-1-Transmitter/1211856_1774391429.html</a>	Y	Y	Y	Lighting5 Aoke or Lighting1 ARC	N	Y
ATI Remote Wonder	Y	-	-	ATI	Y	Y
ATI Remote Wonder Plus	Y	-	-	ATI	Y	Y
ATI Remote Wonder II (only available in hardware version 1.0)	Y	-	-	ATI	Y	-
Atlantic security	Y	Y	Y	Meiantech	Y	Y
ByeByeStandBy	Y	Y	Y	ARC	Y	Y
Byron SX chime - <a href="http://www.chbyron.eu/Byron/ByronSXRange/68/89/">http://www.chbyron.eu/Byron/ByronSXRange/68/89/</a>	Y	Y	Y	ByronSX	Y	Y
Byron MP001 chime	-	-	Y	Chime Byron MP001	N	Y
Blyss lighting - <a href="http://www.castorama.fr/store/Prise-telecommandee-et-telecommande-BLYSS---Interieur-prod4470026.html">http://www.castorama.fr/store/Prise-telecommandee-et-telecommande-BLYSS---Interieur-prod4470026.html</a>	Y	Y	Y	AE	Y	Y
BOFU blind motors - <a href="http://www.bofumotor.com/">http://www.bofumotor.com/</a> * = receive only in Type2 used to get the remote ID.	Y	Y	Y	BlindsT0	Y*	Y
Brennenstuhl	Y	Y	Y	Lighting4	Y	Y
Brel blind motors – <a href="http://www.brel-motors.nl/webshop/motoren/">http://www.brel-motors.nl/webshop/motoren/</a>	Y	Y	Y	BlindsT6	N	Y
BTX blind motors – <a href="http://www.btxinc.com">http://www.btxinc.com</a>	-	Y	-	BlindsT9	N	Y
cent-a-meter	Y	Y	Y	Oregon	Y	-
Chacon (learning mode) - <a href="http://www.chacon.be/">http://www.chacon.be/</a>	Y	Y	Y	AC	Y	Y
Chacon (with address code wheels)	Y	Y	Y	ARC	Y	Y
Chacon EMW200	Y	Y	Y	Lighting1 EMW200	N	Y
Chacon 54660 (equal COCO GDR2)	Y	Y	Y	Lighting1 COCO GDR2	N	Y
Chacon KD101 smoke detector	Y	Y	Y	always on	Y	Y
Chamberlain CS4330CN <a href="http://www.chamberlain24.de/epages/es122868.sf/en_GB/?ObjectPath=/Shops/es122868/Products/RA4336">http://www.chamberlain24.de/epages/es122868.sf/en_GB/?ObjectPath=/Shops/es122868/Products/RA4336</a>	-	-	Y	BlindsT8	N	Y
CoCo (learning mode) - <a href="http://www.coco-technology.com/en/home/">http://www.coco-technology.com/en/home/</a>	Y	Y	Y	AC	Y	Y
CoCo (with address code wheels)	Y	Y	Y	ARC	Y	Y
CoCo GDR2 (equal Chacon 54660)	Y	Y	Y	Lighting1 COCO GDR2	N	Y
Conrad RSL2 - <a href="http://www.conrad.com/ce/en/product/640466/FUNK-STECKDOSENSCHALTER-RSLR2">http://www.conrad.com/ce/en/product/640466/FUNK-STECKDOSENSCHALTER-RSLR2</a>	Y	Y	-	RSL	Y	Y
Cresta - TX-320, TS34C, anemometer, UV sensor, rain sensor	Y	Y	Y	Hideki	Y	-
DEA receivers (unencrypted) <a href="http://www.deasystem.com/en/accessory/7/receivers">http://www.deasystem.com/en/accessory/7/receivers</a>	-	-	Y	KeeLoq	Y	Y
Digimax	Y	Y	Y	X10	Y	-

DI.O (learning mode) - <a href="http://www.di-o.be/">http://www.di-o.be/</a>	Y	Y	Y	AC	Y	Y
DI.O (with address code wheels)	Y	Y	Y	ARC	Y	Y
Dolat DLM-1 controlled motors - <a href="http://www.dolat.com.cn/product1.asp?id=538">http://www.dolat.com.cn/product1.asp?id=538</a>	-	Y	-	BlindsT10	N	Y
DomiaLite (with address code wheels)	Y	Y	Y	ARC	Y	Y
Dooya blind motors	Y	Y	Y	BlindsT6	N	Y
Ebode	Y	Y	Y	X10	Y	Y
Electrisave	Y	Y	Y	Oregon	Y	-
ELRO AB400 - <a href="http://www.elro.eu/en/products/cat/home-automation/home-control1">http://www.elro.eu/en/products/cat/home-automation/home-control1</a>	Y	Y	Y	Lighting4	Y	Y
ELRO AB600	Y	Y	Y	ARC	Y	Y
Ematronic RF01, AC114, AC123 - <a href="http://www.ematronic.com/moteurs-volet-roulant/">http://www.ematronic.com/moteurs-volet-roulant/</a>	Y	Y	-	BlindsT1	Y	Y
Energenie - <a href="https://energenie4u.co.uk/">https://energenie4u.co.uk/</a> - ENER010 – 429.935, 5-gang 429.950	Y	Y	Y	Lighting1 Energenie Energenie5	N	Y
Envivo – Chime ENV1348	-	-	Y	Chime Envivo	N	Y
ESMO blind motors	Y	Y	Y	BlindsT6	N	Y
Etekcitcity – <a href="http://etekcity.com/p-300-5-pack-wireless-remote-control-outlet-switch-set-with-2-remote-controls-zap-5lx.aspx">http://etekcity.com/p-300-5-pack-wireless-remote-control-outlet-switch-set-with-2-remote-controls-zap-5lx.aspx</a>	Y	Y	Y	Lighting1 Energenie5	N	Y
Eurodomest (NL – Action) * ARC only	Y*	Y	Y*	Lighting1 ARC Or Lighting5 Eurodomest	N	Y
Everflourish EMW100	Y	Y	Y		N	Y
Flamingo	Y	Y	Y	Lighting4	Y	Y
Flamingo KD101 smoke detector	Y	Y	Y	always on	Y	Y
Forest blind/curtain motors - <a href="http://www.forestgroup.nl/index_nl.html">http://www.forestgroup.nl/index_nl.html</a>	Y	Y	Y	BlindsT7	N	Y
Harrison curtain - <a href="http://www.harrison.nl/home2.htm">http://www.harrison.nl/home2.htm</a>	Y	Y	Y	Curtain Harrison	N	Y
Hasta new blind motors - <a href="http://www.hasta.se/">http://www.hasta.se/</a> * = receive only in Type2 used to get the remote ID.	Y	Y	Y	BlindsT0	Y*	Y
Hasta old blind motors	Y	Y	-	BlindsT1	Y	Y
Hideki weather sensors	Y	Y	Y	Hideki	-	-
HomeEasy EU (learning mode) - <a href="http://www.elro.eu/en/products/cat/home-automation/">http://www.elro.eu/en/products/cat/home-automation/</a>	Y	Y	Y	HE EU	Y	Y
HomeEasy UK – HE105 - <a href="http://www.homeeasy.eu/">http://www.homeeasy.eu/</a>	Y	Y	Y	Thermostat2 HE105	N	Y
HomeEasy UK (learning mode)	Y	Y	Y	AC	Y	Y
HomeEasy UK (with address code wheels)	Y	Y	Y	ARC	Y	Y
Honeywell - TF-ATS34C	Y	Y	Y	Hideki	-	-
Ikea Koppla	Y	-	-	Lighting3	N	Y
Impuls (NL – Action)	Y	Y	Y	Lighting1 Impuls	N	Y
Intertechno (learning mode) - <a href="http://www.intertechno.at/">http://www.intertechno.at/</a>	Y	Y	Y	AC	Y	Y
Intertechno (with address code wheels)	Y	Y	Y	ARC	Y	Y
JVS screens - <a href="http://www.screen-discount.nl/">http://www.screen-discount.nl/</a>	Y	Y	Y	BlindsT6	N	Y
Kambrook RF3672 – <a href="http://www.bunnings.com.au/kambrook-4-piece-indoor-powerpoint-kit-with-remote-control_p7030054">http://www.bunnings.com.au/kambrook-4-piece-indoor-powerpoint-kit-with-remote-control_p7030054</a>	-	Y	Y	Lighting2 Kambrook	N	Y
Kingpin KP100 projection screen	Y	Y	Y	Lighting4	N	Y
KlikAanKlikUit (learning mode) - <a href="http://www.klikaanklikuit.nl/home/">http://www.klikaanklikuit.nl/home/</a>	Y	Y	Y	AC	Y	Y
KlikAanKlikUit (with address code wheels)	Y	Y	Y	ARC	Y	Y
La Crosse - TX2, TX3, TX3P, TX4, TX7, TX17, WS2300	Y	Y	Y	LaCrosse	Y	-
Lexibook	Y	Y	Y	Hideki	Y	-



- SM883						
LightwaveRF - <a href="http://www.lightwaverf.co.uk/">http://www.lightwaverf.co.uk/</a>	Y	Y	Y	AD	Y	Y
Livolo - <a href="http://www.livolonederland.nl/">http://www.livolonederland.nl/</a> - <a href="http://www.livolo-france.com/fr/">http://www.livolo-france.com/fr/</a> - <a href="http://nl.aliexpress.com/w/wholesale-livolo-touch-switch.html">http://nl.aliexpress.com/w/wholesale-livolo-touch-switch.html</a>	Y	Y	Y	Lighting5 Livolo	N	Y
Louvolite one touch motorised blinds * = receive only in Type2 used to get the remote ID.	Y	Y	Y	BlindsT0	Y*	Y
Luxaflex - <a href="http://www.luxaflex.se/produkter/luxaflex/rullgardiner/">http://www.luxaflex.se/produkter/luxaflex/rullgardiner/</a>	-	-	Y	RFY	N	Y
Maplin <a href="http://www.maplin.co.uk/p/remote-controlled-mains-socket-set-single-n78ka">http://www.maplin.co.uk/p/remote-controlled-mains-socket-set-single-n78ka</a>	Y	Y	Y	Lighting1 COCO GDR2	N	Y
Maverick ET-732 BBQ/Smoke temperature	Y	Y	Y	Hideki	Y	-
MDremote LED dimmer - <a href="http://www.ultraleds.co.uk">www.ultraleds.co.uk</a>	Y	Y	Y	Lighting5 MDRemote	N	Y
Meade – TS33F-M, TS34C-M <a href="http://www.meade.com/products/weatherstations/sensors.html">http://www.meade.com/products/weatherstations/sensors.html</a>	Y	Y	Y	Hideki	Y	-
Meiantech security	Y	Y	Y	Meiantech	Y	Y
Media Mount Projector screen	-	Y	-	Lighting4	N	Y
Mercury appliance modules - <a href="http://mercury.avsl.com/product?range=ME5124">http://mercury.avsl.com/product?range=ME5124</a>	Y	Y	Y	Lighting1 Energenie5	N	Y
Mertik Maxitrol Fire Place controllers - G6R-H4T1, G6R-H4T5, G6R-H4T, G6R-H4TB, G6R-H4T21-Z22	Y	Y	Y	Mertik	Y	Y
mi.sol WH2 <a href="http://www.ebay.com/itm/Transmitter-for-Wireless-Weather-Station-wireless-temperature-sensor-/121664060899">http://www.ebay.com/itm/Transmitter-for-Wireless-Weather-Station-wireless-temperature-sensor-/121664060899</a>	Y	Y	Y	FineOffset	Y	-
NEXA (learning mode) - <a href="http://www.nexa.se/">http://www.nexa.se/</a>	Y	Y	Y	AC	Y	Y
NEXA (with address code wheels)	Y	Y	Y	ARC	Y	Y
NEXA KD101 smoke detector	Y	Y	Y	always on	Y	Y
NEXUS - 1008T	Y	Y	Y	Hideki	Y	-
Opus XT300 /Imagintronix Soil sensor <a href="http://www.plantcaretools.com/en/webshop/wireless-moisture-sensor-en-detail">http://www.plantcaretools.com/en/webshop/wireless-moisture-sensor-en-detail</a> <a href="http://www.ebay.co.uk/itm/Wireless-Soil-Moisture-Sensor-/251380900939?pt=UK_Home_Garden_Garden_Plants_Fertiliser_CV&amp;hash=item3a8778244b">http://www.ebay.co.uk/itm/Wireless-Soil-Moisture-Sensor-/251380900939?pt=UK_Home_Garden_Garden_Plants_Fertiliser_CV&amp;hash=item3a8778244b</a>	Y	Y	Y	XT300	Y	-
Oregon Scientific / Huger BBQ and weather sensors - AW129, AW131, BTHGN129, BTHR918, BTHR918N, BTHR968, EW109, PCR800, RGR126, RGR682, RGR918, RGR928, RTGN318, RTGR328N, RTGR328N, RTGR368N, RTGR383, RTHN318, STR918, STR928, ,TGHN800, TGHN801, THC138, THC238, THC268, THGN122NX, THGN123N, THGN132ES, THGN132N, THGN500, THGR122(N/NX), THGR228(N/NF), THGR238, THGR268, THGR328N, THGR810, THGR918, THGR928, THGRN228NX, THN122N, THN132N, THR128, THR138, THR288(N/NF), THRN122N, THWR288A, THWR800, UV138, UVN128, UVN800, UVR128, WGR800, WGR918, WTGR800, WTGR800	Y	Y	Y	Oregon	Y	-
Oregon Scientific weighting scales - BWR101, BWR102, GR101	Y	-	Y	Oregon	Y	-
Oregon MSR939 <a href="https://www.redealer.de/multimedia/home-living/wetterstationen/bewegungssensor-msr939/a-200667/">https://www.redealer.de/multimedia/home-living/wetterstationen/bewegungssensor-msr939/a-200667/</a>	-	-	Y	Oregon	Y	-
OTIO Lighting	Y	Y	-	RSL	Y	Y
OWL - <a href="http://www.theowl.com/">http://www.theowl.com/</a> - CM113, CM119, CM160, CM180, CM180i	Y	Y	Y	Oregon	Y	-
Phenix	Y	Y	Y	Lighting4	Y	Y
Philips SBC SP370 series	-	Y	-	Lighting1 Philips SBC	N	Y
Prego P-8426 <a href="http://www.sunmarket.fi/tuote.asp?TID=11990">http://www.sunmarket.fi/tuote.asp?TID=11990</a>	Y	Y	Y	X10	Y	-
Proluxx projection screen	Y	Y	Y	Lighting4	N	Y
Proove –TSS320 & TSS330 fridge/freezer thermometer & outdoor sensors 311346,311501	Y	Y	Y	FineOffset	Y	-
RAEX blind motor (YR1326 controlled) - <a href="http://www.beckermotors.co.uk/">http://www.beckermotors.co.uk/</a>	-	Y	-	BlindsT1	Y	Y
Revolt NC5461	-	Y	-	RSL	Y	-

- <a href="http://www.pearl.de/a-NC5462-5452.shtml">http://www.pearl.de/a-NC5462-5452.shtml</a>						
RFXSensor	Y	Y	Y	X10	Y	-
RFXMeter	Y	Y	Y	X10	Y	-
RGB LED strip driver dx.com - <a href="http://www.dx.com/">http://www.dx.com/</a> order nbr: 130913, (new TRC02 NOT supported) - <a href="http://www.dx.com/">http://www.dx.com/</a> order nbr: 67412 * = receive only in Type2 used to get the RGB remote ID.	Y*	Y	y*	AD	Y*	Y
RGB LED controller <a href="http://www.ebay.com/itm/191481664563">http://www.ebay.com/itm/191481664563</a> (maybe dx.com 227892)	Y	Y	Y	Lighting5 RGB432W	N	Y
RisingSun	Y	Y	Y	Lighting4	Y	Y
RUBICSON - stektermometer 48659, 48695	Y	-	Y	Rubicson	Y	-
RohrMotor24 RMF blind motors - <a href="http://www.rohrmotor24.eu/rohrmotor24">http://www.rohrmotor24.eu/rohrmotor24</a>	Y	Y	Y	BlindsT6	N	Y
RollerTrol blind motors - <a href="http://rollertrol.com/">http://rollertrol.com/</a> * = receive only in Type2 used to get the remote ID.	Y	Y	Y	BlindsT0	Y*	Y
Sartano	Y	Y	Y	Lighting4	Y	Y
SelectPlus200689101 & SelectPlus200689103 (Action NL)	-	Y	Y	ByronSX	Y	Y
Siemens SF01 LF959RA50/LF259RB50/LF959RB50 extractor hood	Y	Y	Y	Fan SF01	N	Y
Siemens (UK)	Y	Y	Y	AD	Y	Y
Simu / RTS (RFXtrx433E only) - <a href="http://www.simu.com/">http://www.simu.com/</a>	-	-	Y	RFY	N	Y
Smartwares radiator valve - <a href="http://www.homewizard.nl/smartwares-draadloze-radiatorkraan.html">http://www.homewizard.nl/smartwares-draadloze-radiatorkraan.html</a>	-	-	Y	Radiator1 Smartwares	N	Y
Somfy / RTS - <a href="http://www.somfy.co.uk/">http://www.somfy.co.uk/</a>	-	-	Y	RFY	N	Y
Sunperly blind motors	-	Y	-	BlindsT9	N	Y
Sunvic TLX1206	Y	Y	Y	X10	Y	Y
Sunvic TLX7506	Y	Y	Y	X10	Y	-
TechnoLine/Proficell <a href="http://www.elv.de/output/controller.aspx?cid=74&amp;detail=10&amp;detail2=27621">http://www.elv.de/output/controller.aspx?cid=74&amp;detail=10&amp;detail2=27621</a> - TX95-TH	Y	Y	Y	Hideki	Y	-
TFA - TS15C, TS34C, external temperature sensor 30.3133, anemometer 30.3149, UV sensor, rain sensor 30.3148, pool sensor 30.3160	Y	Y	Y	Hideki	Y	-
UPM/Esic (very short receiving range) - WT260, WT260H, WT440H, WT450, WT450H, WDS500, RG700	Y	-	-	Hideki	Y	-
Viking - 02035, 02038, 02811	Y	Y	Y	FineOffset	Y	-
Visonic CodeSecure	Y	Y	Y	Visonic	Y	-
Visonic PowerCode	Y	Y	Y	Visonic	Y	Y
Waveman	Y	Y	Y	Lighting1 Waveman	N	Y
WT0122 pool sensor	-	-	Y	FineOffset	Y	-
YOODA blind motors - <a href="http://www.sukcesgroup.pl">http://www.sukcesgroup.pl</a>	Y	Y	Y	BlindsT6	N	Y
X10 Ninja/Robocam	-	Y	-	X10	Y	Y
X10 PC Remote	Y	-	Y	X10	Y	Y
X10 RTS10 / RFS10	Y	Y	Y	X10	Y	Y
X10 lighting	Y	Y	Y	X10	Y	Y
X10 security	Y	Y	Y	X10	Y	Y
Xdom	Y	Y	Y	X10	Y	Y
Xiron – EN6	Y	-	Y	Rubicson	Y	-

### 2.3. undec on

This parameter is for internal use by RFXCOM!!!

If new sensor types are released they will most probably not be decoded by the RFXtrx firmware. For this reason we have added the option to enable receive of undecoded messages. This function is only to enable RFXCOM to add this new sensor type in the firmware if possible. If “undec on” is enabled in normal use the application will receive a lot of undecoded messages mostly as a result of RF noise or disturbed RF packets.

**Important:** For normal use “undec on” should be disabled

## 2.4. Sensitivity influenced by enabled protocols

The sensitivity of the receiver part is highly influenced by the number of protocols enabled. Lesser protocols enabled will make the receiver more sensitive for the enabled protocols.

There are a few protocols that will reduce or even eliminate receiving of other protocols if enabled.

For example:

If the AD (LightwaveRF, Siemens) protocol is enabled it can stop receiving of Meiantech / Atlantic, Oregon 3.0, Visonic and Mertik.

All other protocols are disabled if BlindsT0 is enabled.

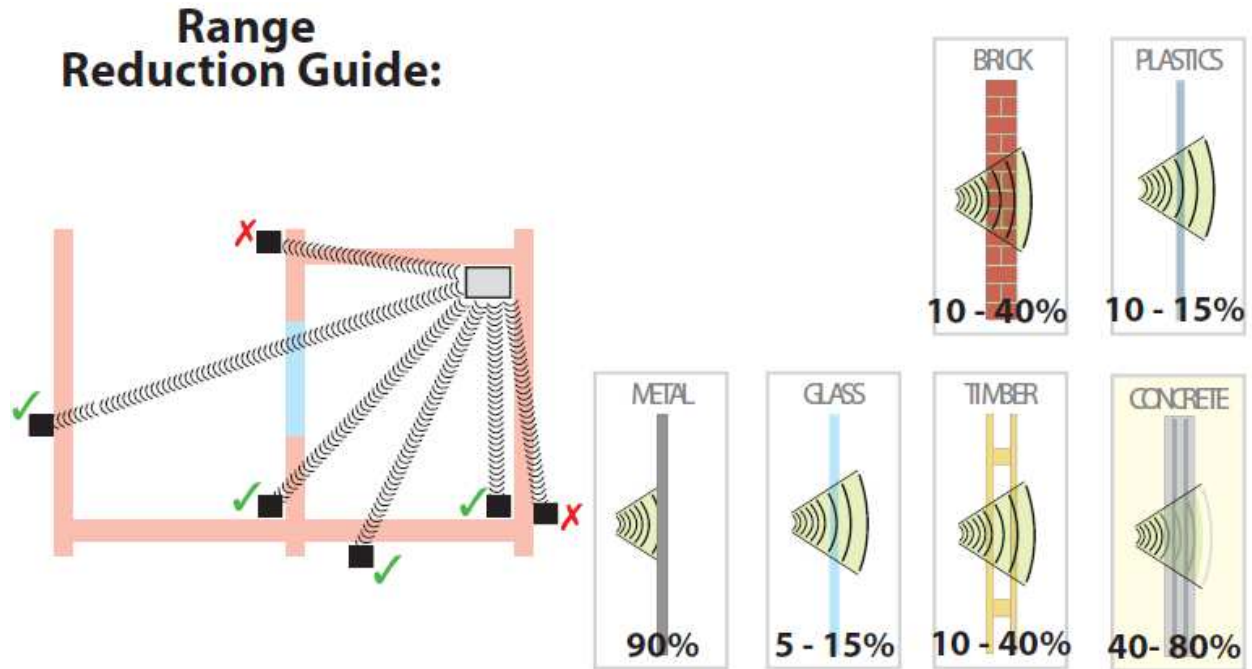
ARC is disabled if Lighting4 is enabled.

	X10	ARC	AC	HomeEasy EU	Meiantech/Atlantic	Oregon 1.0	Oregon 2.1	Oregon 3.0 / OWL	ATI	Visonic	Mertik	AD (LWRF)	Hideki/UPM	La Crosse	FS20	ProGuard	BlindsT0	BlindsT1/T2/T3/T4	AE (Blyss)	Rubicson/Alecto	FineOffset/Viking	Lighting4	RSL/Revolt	Byron SX	Imagintronic/Opus
X10																									
ARC																									
AC																									
HomeEasy EU																									
Meiantech/Atlantic																									
Oregon																									
ATI																									
Visonic																									
Mertik																									
AD (LWRF)																									
Hideki/UPM																									
La Crosse																									
FS20																									
ProGuard																									
BlindsT0																									
BlindsT1/T2/T3																									
AE (Blyss)																									
Rubicson																									
FineOffset/Viking																									
Lighting4																									
RSL																									
Byron SX																									
Imagintronic																									

Green = enabled by default

## 2.5. RF range reduction

The RF signals operating distance is reduced when the signal has to pass through walls.



## 2.6. Home Automation software

For the list of Home Automation software that supports the RFXtrx see the web site [www.rfxcom.com](http://www.rfxcom.com)

## 2.7. Dimensions

The dimensions of the RFXtrx/RFXrec are: 83.5 x 42 x 15 mm  
Total height from bottom to antenna top is 122mm

The dimensions of the RFXtrx433E are: 83 x 59 x 22 mm  
Total height from bottom to antenna top is 130mm

## 2.8. Electrical

The RFXtrx is powered by the 5 Volt of the USB interface.

Operating current;

Receive mode: 28 mA (0.14Watt)  
Transmit mode: 45 mA

The RFXtrx Radiated RF power is 10dBm max.

## 2.9. Environmental conditions

Normal operating: 15°C to 35°C  
Absolute min-max temperature: -10°C to 55°C

### 3. Install the USB driver

The RFXtrx has the FTDI FT232R USB interface chip installed.

The USB drivers are available at <http://www.ftdichip.com/Drivers/VCP.htm>

### 4. Run RFXflash on Linux under Mono

Open a Terminal screen in Linux (Ctrl-Alt-T)

Execute once:

*Install Mono:*

```
[sudo] apt-get install mono-runtime
```

*Install VisualBasic support under Mono:*

```
[sudo] apt-get install libmono-microsoft-visualbasic8.0-cil
```

If the USB device is created as ttyACMx you will need to create a link between /dev/ttyACMx and a serial port /dev/ttySx.

This is not necessary if the device is created as /dev/ttyUSBx !!

```
[sudo] ln -sf /dev/ttyACM1 /dev/ttyS3
```

Note: sudo must be entered without brackets [ ]. sudo is required if not running as super user.

*Launch the RFXflash.exe program.*

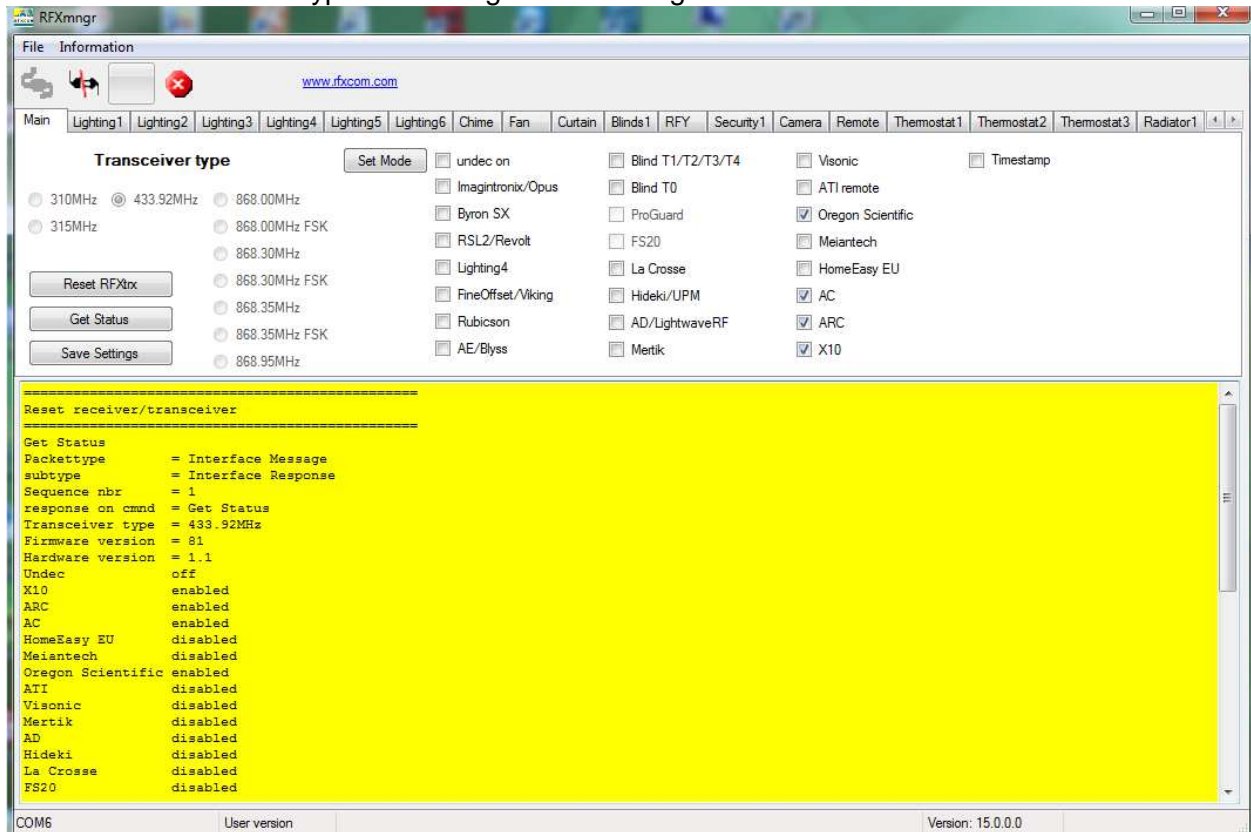
```
[sudo] mono RFXflash.exe
```

Note: RFXmngnr does not operate under mono!

## 5. RFXmngnr test program

The RFXmngnr program supports decoding of received data and allows you to transmit commands.

After the connection the RFXmngnr program transmits a Reset and Get Status command so that it will know the RFXtrx type and configuration settings:



Transmitter protocols are always enabled but receiver protocols can be disabled. This is very useful because the receiver will become more sensitive when protocols not used are disabled. So select only the protocols to be used, click **Set mode** and click **Save Settings**.

Note that these settings are lost after a firmware update and need to be set again.

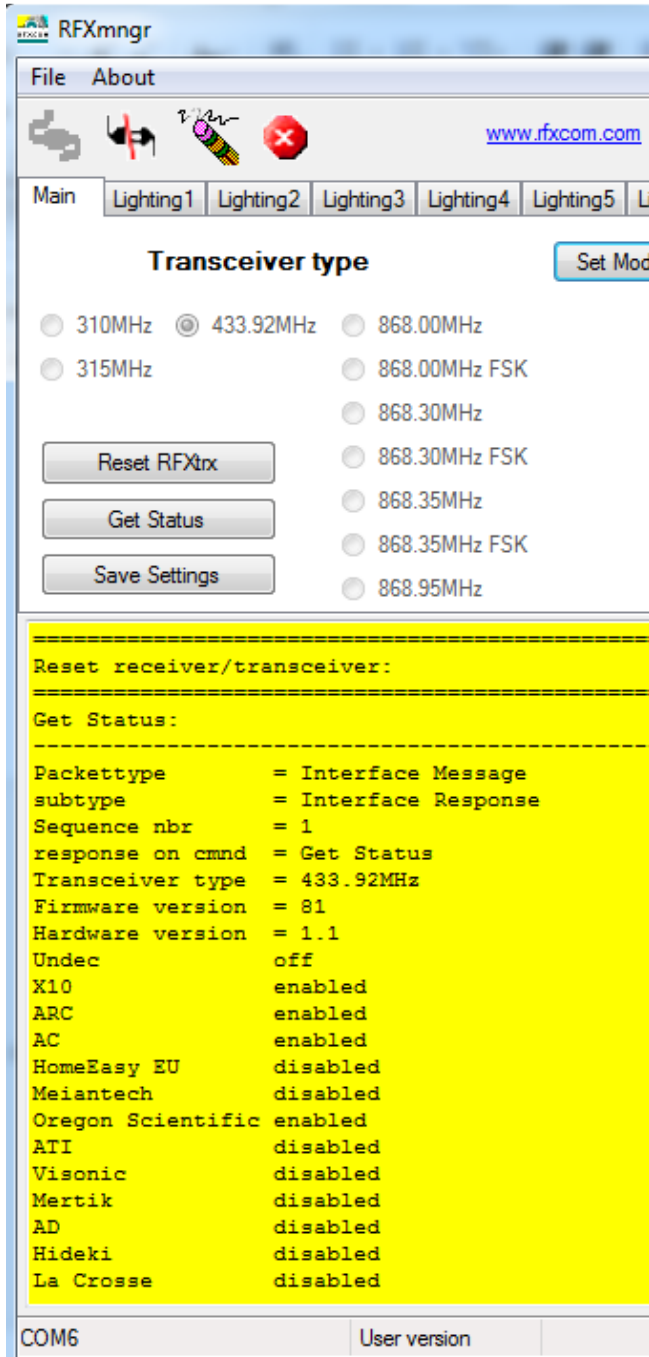
## 5.1. Receiver

The RF protocols to be received can be configured on the Main tab at **Set Mode**. Click **Save Settings** to save the selected protocols in non-volatile memory of the RFXtrx. This configuration is now restored every time after a power up.

Note that these settings are lost after a firmware update and need to be set again.

**Note:** Protocol enabling is only necessary for receive. Transmit protocols are always enabled.

The received RF data is decoded and displayed in the yellow window.





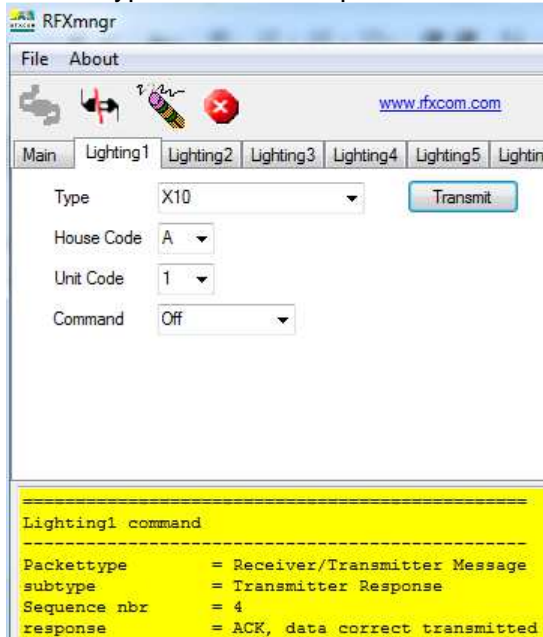
## 5.2. Transmitter

The tabs after the Main tab are used to send commands to the transmitter.

For example Lighting1 is used to send X10, ARC and some more.

**Note:** Protocol enabling is only necessary for receive. Transmit protocols are always enabled.

Select Type to see which protocols are supported on the different tabs.



The transmitted commands are displayed in the yellow window including the acknowledge send by the RFXtrx, in the example above “ACK, data correct transmitted“.

## 6. Flash update of the RFXtrx

### 6.1. Update firmware in the RFXtrx

Firmware is flashed in the RFXtrx using this procedure:

1. Depending on the RFXtrx type download the latest RFXtrx315\_yy.hex, RFXrec433\_yy.hex or RFXtrx433\_yy.hex firmware file.
2. Connect the RFXtrx to a Windows system or Linux under MONO
3. Stop any program that is connected to the RFXtrx.
4. Start the RFXflash program (version 4.0.0.0 or higher)
5. Select the USB RFXtrx COM port and click the CONNECT button, (the red LED should switch on now)
6. Load the correct.hex firmware file for your RFXtrx,
7. Click the WRITE button,
8. Click the Normal Execution mode button.

#### IMPORTANT:

1. Do not interrupt the flash procedure when started.
2. It can happen that the flash procedure ends with a pop-up screen indicating errors. Just disconnect the RFXtrx and start again at step 5 until the flash procedure is finished without errors.

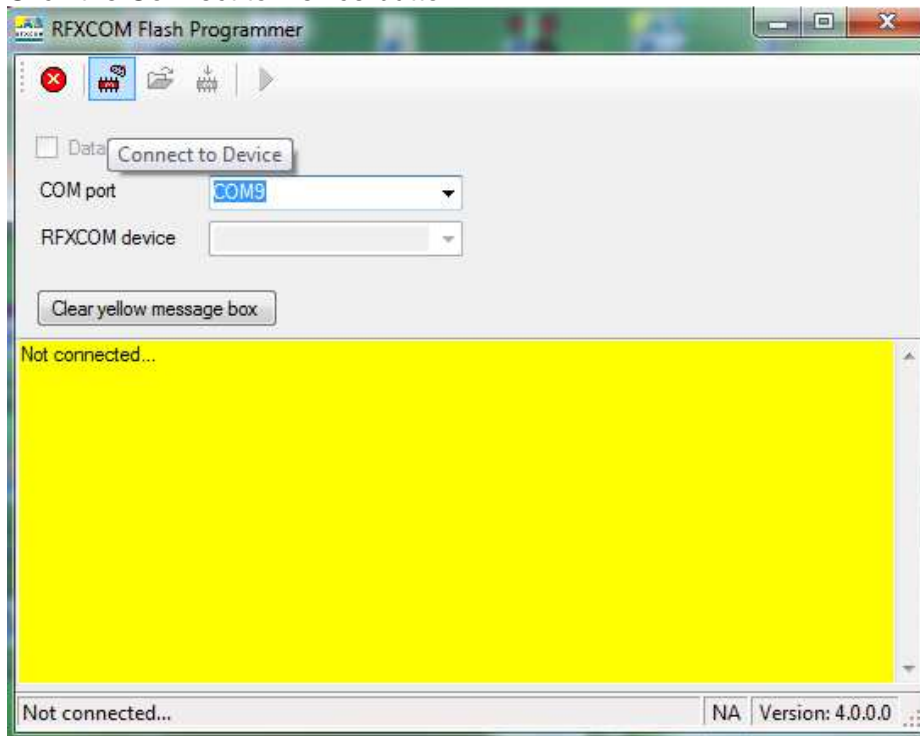
If the red LED does not switch on if you click the CONNECT button:

1. Check if you have selected the correct USB COM port.
2. If you have flashed the RFXtrx before and interrupted the flash procedure it is possible that the RFXtrx does not enter the flash state. Contact [support@rfxcom.com](mailto:support@rfxcom.com) for help.

**Note:** Receiver Settings are lost after a firmware update and have to be set again.

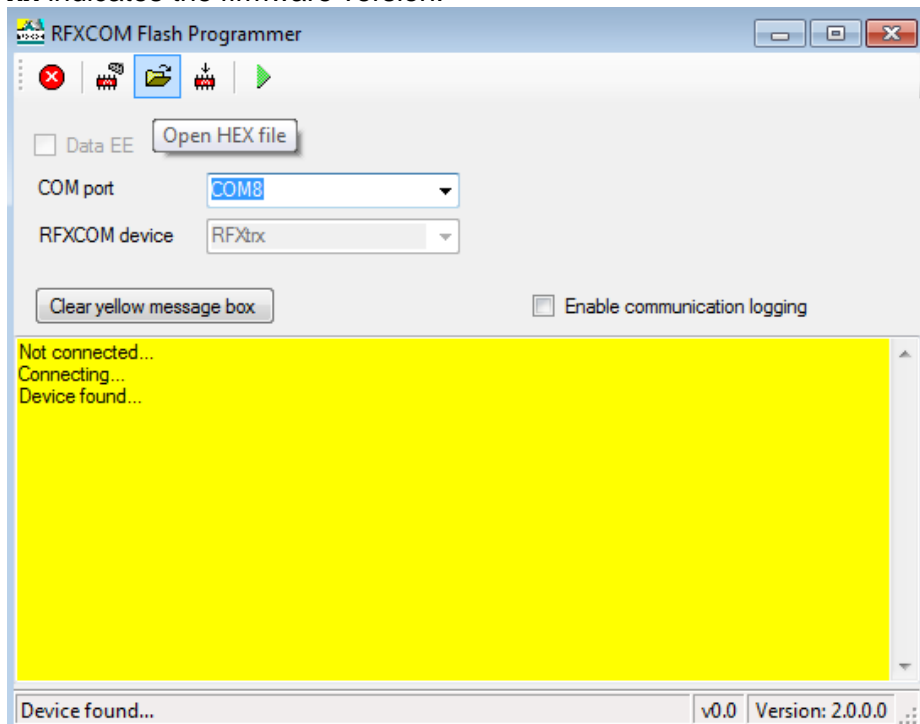
## 6.2. Update firmware in the RFXtrx step by step

- Click the Connect to Device button.

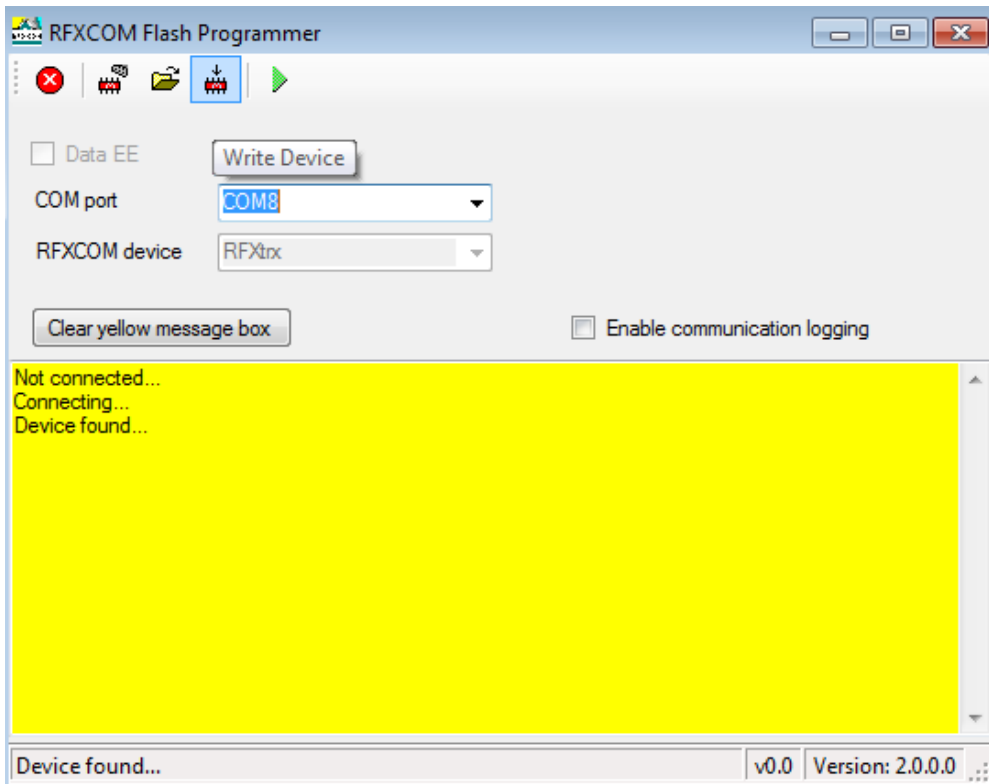


The RFXtrx will automatically switch from normal mode to the bootloader now.

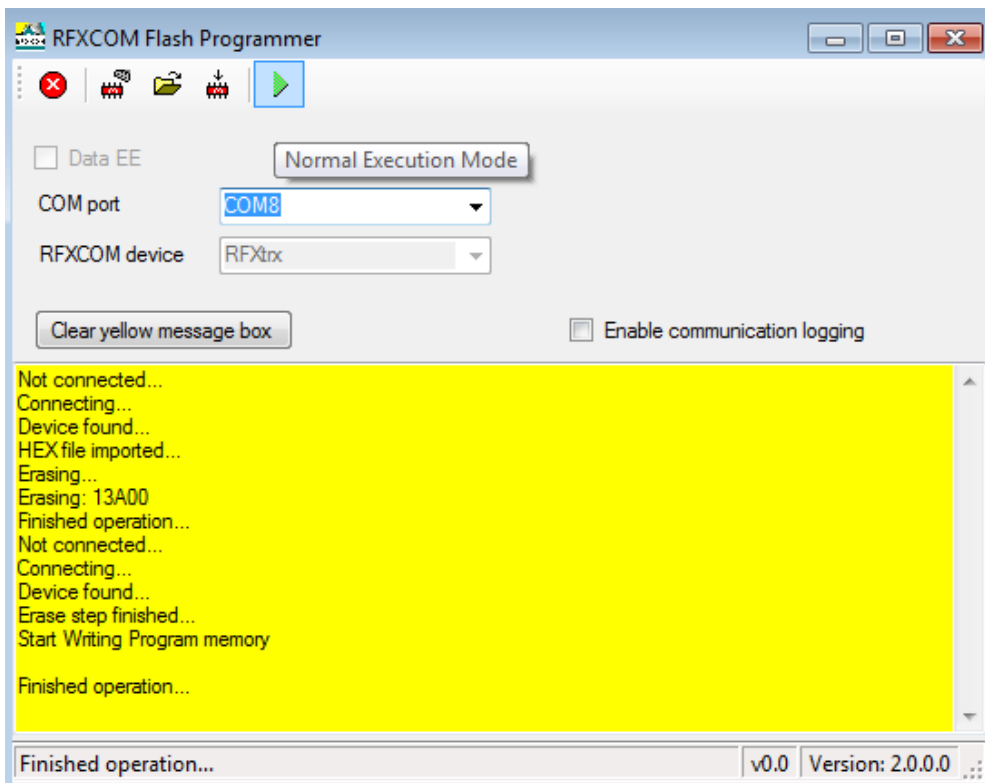
- Click the Open HEX file button and load the RFXtrx $yyy\_xx$ .hex file  
Be sure to load the latest firmware file for the RFXtrx.  
 $yyy$  indicates the RFXtrx frequency, so load the RFXtrx433 for an RFXtrx433!  
 $xx$  indicates the firmware version.



- Click the Write device button and the RFXtrx is flashed.



- Click on the Normal Execution Mode button to set the RFXtrx to running mode.



**Note:** Receiver Settings are lost after a firmware update and have to be set again.

## 7. RFXtrx433 special device codes

### 7.1. Remote commands

#### 7.1.1. X10 RF Remote

Dec	Hex	Button
2	02	0
18	12	8
34	22	4
56	38	Rewind
58	3A	Info
64	40	CHAN+
66	42	2
82	52	Ent
96	60	VOL+
98	62	6
99	63	Stop
100	64	Pause
112	70	Cursor-left
113	71	Cursor-right
114	72	Cursor-up
115	73	Cursor-down
116	74	Cursor-up-left
117	75	Cursor-up-right
118	76	Cursor-down-right
119	77	Cursor-down-left
120	78	left mouse
121	79	left mouse-End
123	7B	Drag
124	7C	right mouse
125	7D	right mouse-End
130	82	1
146	92	9
160	A0	MUTE
162	A2	5
176	B0	Play
182	B6	Menu
184	B8	Fast Forward
186	BA	A+B
192	C0	CHAN-
194	C2	3
201	C9	Exit
209	D1	MP3
210	D2	DVD
211	D3	CD
212	D4	PC / Shift-4
213	D5	Shift-5
214	D6	Shift-Ent
215	D7	Shift-Teletext
216	D8	Text
217	D9	Shift-Text
224	E0	VOL-
226	E2	7
242	F2	Teletext
255	FF	Record

## 7.1.2. ATI Remote Wonder

Dec	Hex	Button	54	36	
0	00	A	55	37	rename TAB
1	01	B	56	38	Acquire image
2	02	power	57	39	edit image
3	03	TV	58	3A	Full screen
4	04	DVD	112	70	DVD Audio
5	05	?	113	71	Cursor-left
6	06	Guide	114	72	Cursor-right
7	07	Drag	115	73	Cursor-up
8	08	VOL+	116	74	Cursor-down
9	09	VOL-	117	75	Cursor-up-left
10	0A	MUTE	118	76	Cursor-up-right
11	0B	CHAN+	119	77	Cursor-down-right
12	0C	CHAN-	120	78	Cursor-down-left
13	0D	1	121	79	V
14	0E	2	124	7C	V-End
15	0F	3	125	7D	X
16	10	4			X-End
17	11	5			
18	12	6			
19	13	7			
20	14	8			
21	15	9			
22	16	txt			
23	17	0			
24	18	snapshot ESC			
25	19	C			
26	1A	^			
27	1B	D			
28	1C	TV/RADIO			
29	1D	<			
30	1E	OK			
31	1F	>			
32	20	<-			
33	21	E			
34	22	v			
35	23	F			
36	24	Rewind			
37	25	Play			
38	26	Fast forward			
39	27	Record			
40	28	Stop			
41	29	Pause			
44	2C	TV			
45	2D	VCR			
46	2E	RADIO			
47	2F	TV Preview			
48	30	Channel list			
49	31	Video Desktop			
50	32	red			
51	33	green			
52	34	yellow			
53	35	blue			

### 7.1.3. ATI Remote Wonder Plus

Dec	Hex	Button	Dec	Hex	Button
0	00	A	35	23	F
1	01	B	36	24	Rewind
2	02	power	37	25	Play
3	03	TV	38	26	Fast forward
4	04	DVD	39	27	Record
5	05	?	40	28	Stop
6	06	Guide	41	29	Pause
7	07	Drag	42	2A	TV2
8	08	VOL+	43	2B	Clock
9	09	VOL-	44	2C	TV
10	0A	MUTE	45	2D	VCR
11	0B	CHAN+	46	2E	RADIO
12	0C	CHAN-	47	2F	TV Preview
13	0D	1	48	30	Channel list
14	0E	2	49	31	Video Desktop
15	0F	3	50	32	red
16	10	4	51	33	green
17	11	5	52	34	yellow
18	12	6	53	35	blue
19	13	7	54	36	rename TAB
20	14	8	55	37	Acquire image
21	15	9	56	38	edit image
22	16	txt	57	39	Full screen
23	17	0	58	3A	DVD Audio
24	18	Open Setup Menu	112	70	Cursor-left
25	19	C	113	71	Cursor-right
26	1A	^	114	72	Cursor-up
27	1B	D	115	73	Cursor-down
28	1C	FM	116	74	Cursor-up-left
29	1D	<	117	75	Cursor-up-right
30	1E	OK	118	76	Cursor-down-right
31	1F	>	119	77	Cursor-down-left
32	20	Max/Restore Window	120	78	Left Mouse Button
33	21	E	121	79	V-End
34	22	v	124	7C	Right Mouse Button
			125	7D	X-End

## 7.1.4. Medion Remote

Dec	Hex	Button	54	36	
0	00	Mute	55	37	rename TAB
1	01	B	56	38	Acquire image
2	02	power	57	39	edit image
3	03	TV	58	3A	Full screen
4	04	DVD	112	70	DVD Audio
5	05	Photo	113	71	Cursor-left
6	06	Music	114	72	Cursor-right
7	07	Drag	115	73	Cursor-up
8	08	VOL-	116	74	Cursor-down
9	09	VOL+	117	75	Cursor-up-left
10	0A	MUTE	118	76	Cursor-up-right
11	0B	CHAN+	119	77	Cursor-down-right
12	0C	CHAN-	120	78	Cursor-down-left
13	0D	1	121	79	V
14	0E	2	124	7C	V-End
15	0F	3	125	7D	X
16	10	4			X-End
17	11	5			
18	12	6			
19	13	7			
20	14	8			
21	15	9			
22	16	txt			
23	17	0			
24	18	snapshot ESC			
25	19	DVD MENU			
26	1A	^			
27	1B	Setup			
28	1C	TV/RADIO			
29	1D	<			
30	1E	OK			
31	1F	>			
32	20	<-			
33	21	E			
34	22	v			
35	23	F			
36	24	Rewind			
37	25	Play			
38	26	Fast forward			
39	27	Record			
40	28	Stop			
41	29	Pause			
44	2C	TV			
45	2D	VCR			
46	2E	RADIO			
47	2F	TV Preview			
48	30	Channel list			
49	31	Video Desktop			
50	32	red			
51	33	green			
52	34	yellow			
53	35	blue			



## 7.2. Harrison address conversion to switch settings

The address used is converted to the address selected in the Harrison curtain motor using the table below.

switch	1	2	3	4		5	6	7	8
	H	H	H	H		X	X	X	X
A	0	1	1	0	1	0	0	0	0
B	0	1	1	1	2	0	0	0	1
C	0	1	0	0	3	0	0	1	0
D	0	1	0	1	4	0	0	1	1
E	1	0	0	0	5	0	1	0	0
F	1	0	0	1	6	0	1	0	1
G	1	0	1	0	7	0	1	1	0
H	1	0	1	1	8	0	1	1	1
I	1	1	1	0	9	1	0	0	0
J	1	1	1	1	10	1	0	0	1
K	1	1	0	0	11	1	0	1	0
L	1	1	0	1	12	1	0	1	1
M	0	0	0	0	13	1	1	0	0
N	0	0	0	1	14	1	1	0	1
O	0	0	1	0	15	1	1	1	0
P	0	0	1	1	16	1	1	1	1

H H H H = House code

X X X X = device code

Switch position in the motor:

Up = 1

Middle = not used!!!!

Down = 0

Examples:

If you assign the address E7 (1000 0110) to the curtain motor then set the switches to: 1=up, 2=down, 3=down, 4=down, 5=down, 6=up, 7=up, 8=down

If you assign the address A2 (0110 0001) to the curtain motor then set the switches to: 1=down, 2=up, 3=up, 4=down, 5=down, 6=down, 7=down, 8=up

### 7.3. Flamingo, AB400, IMPULS, Sartano, Brennenstuhl switch settings

Use type ELRO AB400D

Note that the HC (House Code A-P) is the house code used in programs and has no direct relation with the A,B,C,D,E buttons on the remotes!

```

    1 2 3 4   <== switches
HC=====
A   0 0 0 0
B   0 0 0 1
C   0 0 1 0
D   0 0 1 1
E   0 1 0 0
F   0 1 0 1
G   0 1 1 0
H   0 1 1 1
I   1 0 0 0
J   1 0 0 1
K   1 0 1 0
L   1 0 1 1
M   1 1 0 0
N   1 1 0 1
O   1 1 1 0
P   1 1 1 1

    5 A B C D E           5 A B C D E   <== switches
    5 6 7 8 9 10        5 6 7 8 9 10   <== OR switches
DC=====DC=====
1   0 0 0 0 0 0   33  0 0 0 0 0 1
2   0 0 0 1 0 0   34  0 0 0 1 0 1
3   0 0 1 0 0 0   35  0 0 1 0 0 1
4   0 0 1 1 0 0   36  0 0 1 1 0 1
5   0 1 0 0 0 0   37  0 1 0 0 0 1
6   0 1 0 1 0 0   38  0 1 0 1 0 1
7   0 1 1 0 0 0   39  0 1 1 0 0 1
8   0 1 1 1 0 0   40  0 1 1 1 0 1
9   1 0 0 0 0 0   41  1 0 0 0 0 1
10  1 0 0 1 0 0   42  1 0 0 1 0 1
11  1 0 1 0 0 0   43  1 0 1 0 0 1
12  1 0 1 1 0 0   44  1 0 1 1 0 1
13  1 1 0 0 0 0   45  1 1 0 0 0 1
14  1 1 0 1 0 0   46  1 1 0 1 0 1
15  1 1 1 0 0 0   47  1 1 1 0 0 1
16  1 1 1 1 0 0   48  1 1 1 1 0 1
17  0 0 0 0 1 0   49  0 0 0 0 1 1
18  0 0 0 1 1 0   50  0 0 0 1 1 1
19  0 0 1 0 1 0   51  0 0 1 0 1 1
20  0 0 1 1 1 0   52  0 0 1 1 1 1
21  0 1 0 0 1 0   53  0 1 0 0 1 1
22  0 1 0 1 1 0   54  0 1 0 1 1 1
23  0 1 1 0 1 0   55  0 1 1 0 1 1
24  0 1 1 1 1 0   56  0 1 1 1 1 1
25  1 0 0 0 1 0   57  1 0 0 0 1 1
26  1 0 0 1 1 0   58  1 0 0 1 1 1
27  1 0 1 0 1 0   59  1 0 1 0 1 1
28  1 0 1 1 1 0   60  1 0 1 1 1 1
29  1 1 0 0 1 0   61  1 1 0 0 1 1
30  1 1 0 1 1 0   62  1 1 0 1 1 1
31  1 1 1 0 1 0   63  1 1 1 0 1 1
32  1 1 1 1 1 0   64  1 1 1 1 1 1

```

Examples:

```

A1   0000000000
A15  0000111000
N2   1101000100
N11  1101101000

```

0 = switch off

1 = switch on

## 7.4. Energenie 5-gang 429.950

To know the codes to use open the remote and check the 1 to 5 jumpers connected. If a jumper connection is open it is a 1. If connected it is a 0 (zero)

	1	2	3	4	jumper setting in the remote
HC=====					
A	0	0	0	0	
B	0	0	0	1	
C	0	0	1	0	
D	0	0	1	1	
E	0	1	0	0	
F	0	1	0	1	
G	0	1	1	0	
H	0	1	1	1	
I	1	0	0	0	
J	1	0	0	1	
K	1	0	1	0	
L	1	0	1	1	
M	1	1	0	0	
N	1	1	0	1	
O	1	1	1	0	
P	1	1	1	1	

If jumper 5 is open (1) than add 5 to the remote code.

Examples:

Jumper	1	2	3	4	5	Button Code
1 0 0 0 0	1					I1
1 0 0 0 1	1					I6

## 7.5. Phenix, IDK YC-4000S switch settings

Use type ELRO AB400D

Note that the HC (House Code A-P) is the house code used in programs and has no direct relation with the A,B,C,D,E buttons on the remotes!

```
HC  switch
    1 2 3 4
=====
A   0 0 0 0
B   0 0 0 1
C   0 0 1 0
D   0 0 1 1
E   0 1 0 0
F   0 1 0 1
G   0 1 1 0
H   0 1 1 1
I   1 0 0 0
J   1 0 0 1
K   1 0 1 0
L   1 0 1 1
M   1 1 0 0
N   1 1 0 1
O   1 1 1 0
P   1 1 1 1
```

```
DC  switch
    5 A B C D
=====
1   0 0 0 0 0
2   0 0 0 1 0
3   0 0 1 0 0
4   0 0 1 1 0
5   0 1 0 0 0
6   0 1 0 1 0
7   0 1 1 0 0
8   0 1 1 1 0
9   1 0 0 0 0
10  1 0 0 1 0
11  1 0 1 0 0
12  1 0 1 1 0
13  1 1 0 0 0
14  1 1 0 1 0
15  1 1 1 0 0
16  1 1 1 1 0
17  0 0 0 0 1
18  0 0 0 1 1
19  0 0 1 0 1
20  0 0 1 1 1
21  0 1 0 0 1
22  0 1 0 1 1
23  0 1 1 0 1
24  0 1 1 1 1
25  1 0 0 0 1
26  1 0 0 1 1
27  1 0 1 0 1
28  1 0 1 1 1
29  1 1 0 0 1
30  1 1 0 1 1
31  1 1 1 0 1
32  1 1 1 1 1
```

## 7.6. HE105 switch settings

Unitnr	HE105 switches				
	1	2	3	4	5
0	0	0	0	0	0
1	0	0	0	0	1
2	0	0	0	1	0
3	0	0	0	1	1
4	0	0	1	0	0
5	0	0	1	0	1
6	0	0	1	1	0
7	0	0	1	1	1
8	0	1	0	0	0
9	0	1	0	0	1
10	0	1	0	1	0
11	0	1	0	1	1
12	0	1	1	0	0
13	0	1	1	0	1
14	0	1	1	1	0
15	0	1	1	1	1
16	1	0	0	0	0
17	1	0	0	0	1
18	1	0	0	1	0
19	1	0	0	1	1
20	1	0	1	0	0
21	1	0	1	0	1
22	1	0	1	1	0
23	1	0	1	1	1
24	1	1	0	0	0
25	1	1	0	0	1
26	1	1	0	1	0
27	1	1	0	1	1
28	1	1	1	0	0
29	1	1	1	0	1
30	1	1	1	1	0
31	1	1	1	1	1

## 7.7. MDREMOTE

This MDREMOTE has been tested.

<http://www.ultraleds.co.uk/mini-dimmer-with-rf-remote-control-12-or-24v-dc-12a-maximum.html>

The RFXtrx433 can only transmit MDREMOTE commands.

Procedure to find the ID of the MDREMOTE:

In RFXmngnr enable the X10 protocol and enable "Undec on"

Press a button on the MDREMOTE remote.

The undecoded message contains the ID in the 2<sup>nd</sup> and 3<sup>rd</sup> byte, for example:

```
-----  
Packettype    = UNDECODED RF Message  
UNDECODED NEC:20AF6801D1
```

The 2 bytes after 20 is the MDREMOTE ID, in this example AF 68

## 7.8. Aoke relay

The Aoke 12V DC - 315MHz or 433.92MHz 1 channel relay is available at [www.aliexpress.com](http://www.aliexpress.com) store No.110758. Indicate clearly the required frequency when ordering!

The 1 channel learning relays can be used, see the picture below.

For example, for 1 relay:

[http://www.aliexpress.com/store/product/DC12V-1CH-wireless-switch-remote-control-system-remote-control-switch-for-guard-door-window-curtain/110758\\_936534863.html](http://www.aliexpress.com/store/product/DC12V-1CH-wireless-switch-remote-control-system-remote-control-switch-for-guard-door-window-curtain/110758_936534863.html)

or for 6 relays:

[http://www.aliexpress.com/store/product/ak-DC12V-1CH-RF-rocker-switch-livolo-switch-system-in-china-j-12a-108d-smart-house/110758\\_1007306574.html](http://www.aliexpress.com/store/product/ak-DC12V-1CH-RF-rocker-switch-livolo-switch-system-in-china-j-12a-108d-smart-house/110758_1007306574.html)

The jumper next to the learning button defines to operating mode:

Open = momentary

1-2 = toggle mode

2-3 = on/off mode (to be used with the RFXtrx)



## 8. Blyss commands

Some Blyss devices, like the Blyss motors, require a special command sequence number. To simplify it; 0,1,2,3,4,0,1,...

This sequence number is normally created by the Blyss remote but now also by the RFXtrx433.

If you use a Blyss remote and the application (Domoticz, DomotiGa, Homeseer...) does not sync with the received Blyss command you will see that you need to send multiple commands with the RFXtrx433 before the Blyss device will respond.

For example,

The Blyss remote transmits with the sequence numbers 0,1,2

If the RFXtrx433 transmits now with sequence number 0 it will not be seen by the Blyss device as a valid command and at the time the RFXtrx433 transmits the commands 1,2,3 the command will be detected as valid when it receives the command with sequence number 3.

The same is true for the remote. If you transmit commands with the RFXtrx433 and after that with a Blyss remote you need to transmit several commands with the remote before the Blyss device responds.

I guess the same behaviour will show if you use multiple Blyss remotes.

## 9. How to find the dx.com RGB LED strip driver ID

Valid for the TRC02 remote with 2 batteries.

Flash the RFXtrx433 with Type2 firmware to be able to receive the remote ID in RFXmngnr. In RFXmngnr enable only the LightwaveRF (AD) protocol.

```
-----  
Packettype = Lighting5  
subtype    = RGB TRC02  
Sequence nbr = 5  
ID         = FCC48B  
Command    = On  
Signal level = 8
```

The ID is: FC C4 8B

If necessary flash the RFXtrx433 back to Type1 or ext if Type2 does not support devices you need. (See chapter 2.2)

## 10. How to find the dx.com RGB LED strip driver ID (rev. 2)

Valid for the TRC02 remote with 3 batteries and ebay.com 191481664563.

In RFXmngnr enable only the Lighting4 protocol.

```
-----  
Packettype = Lighting4  
subtype    = PT2262  
Sequence nbr = 29  
Code       = 161C84
```

The ID is: 16 1C

## 11. How to find the Eurodomest ID

You can assign a random ID to the Eurodomest. If you want to use the same ID as the remote you can find the ID of the remote using RFXmngnr.

Start RFXmngnr and enable only the Lighting4 protocol.

Press a button on the remote and you will receive a message like:

```
-----  
Packettype = Lighting4  
subtype    = PT2262  
Sequence nbr = 12  
Code       = 6DFE0F
```

The ID is: 6 DF E0

Note: Eurodomest can also be controlled using ARC.

## 12. Somfy RTS

Somfy RTS\* devices can only be controlled by the RFXtrx433E. (not with the RFXtrx433)  
The RFXtrx433E version is an RFXtrx433 with additional hardware to enable the RFY protocol used to control Somfy RTS.

To pair the Somfy RTS device:

- Select a unique ID and unitcode for the RFXCOM RFY device.
- Disconnect power from all Somfy RTS devices except the device to pair.
- Press the Program button > 2 seconds on the original Somfy remote until the Somfy device responds.
- Transmit a Program command with the RFXtrx433E. The Somfy RTS device should respond indicating the pair command was successful.

The RFXCOM RFY remote is registered in the RFXtrx433E by sending a Program command.  
Up to 30 RFXCOM RFY remotes can be registered in the RFXtrx433E.  
Remotes can be erased from the RFXtrx433E using the RFXmngr program.

The Somfy RTS device can be controlled by any application as long as the same ID and Unit Code are used.

For example if the RTS device is paired using RFXmngr with ID=1 02 03 and Unit Code 1, the RTS device can be controlled with Homeseer using the same ID and unit code.

\* Somfy RTS are registered trademarks of Somfy System, Inc.



### 13. Transmit undecoded ARC commands.

Plug-in modules or other equipment with a PT2262 can be controlled using Lighting4. There are a lot of brands using the PT2262 and some of them use the same timing (350) as used by the ARC devices but a different protocol definition.

Messages will be received as undecoded ARC messages if the protocol definition does not match the definition of the ARC protocol. Remote commands are received as ARC commands with a wrong house and device code and/or command code or as undecoded ARC messages if "undec on" is enabled. Decoding of these remotes is therefore not possible because they overlap the ARC protocol partly.

But transmitting these commands is possible using the Lighting4 command.

So if we receive this command UNDECODED ARC:18014403:  
(18 is not used)

hex to binary table

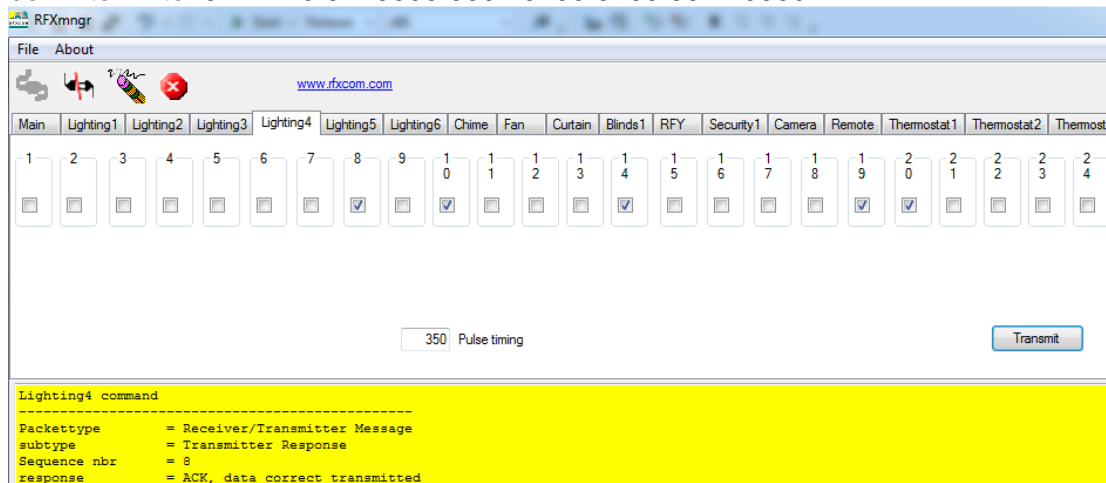
- 0=0 0 0 0
- 1=0 0 0 1
- 2=0 0 1 0
- 3=0 0 1 1
- 4=0 1 0 0
- 5=0 1 0 1
- 6=0 1 1 0
- 7=0 1 1 1
- 8=1 0 0 0
- 9=1 0 0 1
- A=1 0 1 0
- B=1 0 1 1
- C=1 1 0 0
- D=1 1 0 1
- E=1 1 1 0
- F=1 1 1 1

0 1 4 4 0 3 = selection box 0000 0001 0100 0100 0000 0011  
Not selected = 0, box selected = 1

And the Lighting4 command contains the same "undec code" 01 44 03:  
Lighting4 command:09 13 00 04 **01 44 03** 01 5E 00  
pulse timing is 350 = hex 015E

Another example:

For this command UNDECODED ARC:18014430 set on the Lighting4 tab in RFXmng selection box 1 to 24 to 0 1 4 4 3 0 = 0000 0001 0100 0100 0011 0000



## 14. Known Lighting4 devices

### 14.1. Proluxx projection screen

Use Lighting4 with a pulse timing of 360

UP	1110	1101	0101	1001	0101	0010	ED	5A	52
STOP	1110	1101	0101	1001	0101	1000	ED	5A	58
DOWN	1110	1101	0101	1001	0101	0100	ED	5A	54
RESET	1110	1101	0101	1001	0101	0001	ED	5A	51

### 14.2. Kingpin (KP100) projection screen

Use Lighting4 with a pulse timing of 1040

UP	1110	0001	0100	0010	0010	0010	E1	42	22
STOP	1110	0001	0100	0010	0010	0100	E1	42	24
DOWN	1110	0001	0100	0010	0010	1000	E1	42	28
PROGRAM	1110	0001	0100	0010	0010	0001	E1	42	21

### 14.3. Mercury remote control mains sockets

<http://mercury.avsl.com/product?range=ME5124>

Use Lighting4 with a pulse timing of 188

1 OFF	01000100010101010011	1100
1 ON	01000100010101010011	0011
2 OFF	01000100010101011100	1100
2 ON	01000100010101011100	0011
3 OFF	01000100010101110000	1100
3 ON	01000100010101110000	0011
4 OFF	01000100010111010000	1100
4 ON	01000100010111010000	0011
5 OFF	01000100011101010000	1100
5 ON	01000100011101010000	0011

### 14.4. Conrad 034911 sockets

<http://www.conrad.nl/ce/nl/product/034911/Draadloze-schakelaarset-5-delig>

Use Lighting4 with a pulse timing of 425

Off = last 2 digits: 00

ON = last 2 digits: 01

Group	Unit											
I	1 OFF	00	01	01	01	00	01	01	01	01	01	00
II	1 OFF	01	00	01	01	00	01	01	01	01	01	00
III	1 OFF	01	01	00	01	00	01	01	01	01	01	00
IV	1 OFF	01	01	01	00	00	01	01	01	01	01	00
I	1 OFF	00	01	01	01	00	01	01	01	01	01	00
I	2 OFF	00	01	01	01	01	00	01	01	01	01	00
I	3 OFF	00	01	01	01	01	01	00	01	01	01	00
I	4 OFF	00	01	01	01	01	01	01	00	01	01	00
I	1 OFF	00	01	01	01	00	01	01	01	01	01	00
I	1 ON	00	01	01	01	00	01	01	01	01	01	01

## 15. EC Declaration of Conformity

# EC Declaration of Conformity

RFXCOM declares that the product:

**RFXtrx**

**Brand: RFXCOM    Type: RFXtrx433E**

conforms with the essential requirements and other relevant provisions of the following directives and complies with the following standards applied:

R&TTE Directive 99/5/EC	EN 300 220-1 V2.3.1 (2010-02) EN 300 220-2 V2.3.1 (2010-02)
-------------------------	--

Low-voltage Directive 2006/95/EC	IEC 60950-1 (2005-12)
----------------------------------	-----------------------

EMC Directive 2004/108/EC	EN 301 489-1 V1.9.2 (2011-09) EN 301 489-3 V1.4.1 (2002-08)
---------------------------	--

## 16. Warning:

- RF signals are possible disturbed and it has not been justified for this equipment at uses in circumstances where life-threatening or dangerous situations are possible.
- RFXCOM HARDWARE AND SOFTWARE IS NOT INTENDED FOR USE IN THE OPERATION OF NUCLEAR FACILITIES, AIRCRAFT NAVIGATION OR COMMUNICATION SYSTEMS, AIR TRAFFIC CONTROL SYSTEMS, LIFE SUPPORT MACHINES OR OTHER EQUIPMENT IN WHICH THE FAILURE OF THE SOFTWARE COULD LEAD TO DEATH, PERSONAL INJURY, OR SEVERE PHYSICAL OR ENVIRONMENTAL DAMAGE.

## 17. License

- You are allowed to use RFXCOM software, protocols and Written Materials with RFXCOM hardware only.
- All copyright and other proprietary notices associated with RFXCOM software, protocols and Written Materials shall be visible to all users.
- You may not sell, distribute, loan, rent, lease, license, sublicense or otherwise assign or transfer RFXCOM software or RFXtrx protocols or Written Materials unless expressly authorized in writing by RFXCOM.
- You may not use any RFXCOM device, software or protocol as part of an exclusive or patented product without the express prior written permission of RFXCOM.
- You may not alter, modify, adapt or create derivative works based on any part of RFXCOM software or protocols or Written Materials in any way, including translating, reverse engineering, disassembling or decompiling the software.

## 18. Copyright notice

- All RFXCOM hardware, software, protocols and Written Materials are protected by copyright laws, and may not be reproduced, republished, distributed, transmitted, displayed, broadcast or otherwise exploited in any manner without the express prior written permission of RFXCOM.
- Netherlands Copyright and international treaty provisions protect the SOFTWARE, HARDWARE, RFXtrx protocols and Written Materials and shall be subject to the exclusive jurisdiction of the Netherlands Courts
- RFXCOM reserves all rights not expressly granted herein.

## 19. Revision history

- Version 0.0 – August 18, 2011  
Initial version.
- Version 1.0 – October 30, 2011  
RFXflash under Mono added.
- Version 2.0 – December 30, 2011  
Updated for the production version with FTDI USB chip
- Version 2.1 – January 18, 2012  
Link for ACM to serial port added in Linux instruction.  
EC Declaration of Conformity added
- Version 2.2 – February 8, 2012  
Protocols overview added  
Screen dumps updated
- Version 2.3 – February 16, 2012  
Novatys planned
- Version 2.4 – February 25, 2012  
General information updated
- Version 2.5 – March 1, 2012  
Chapter added how to run RFXmngn or RFXflash on Linux.
- Version 2.6 – March 14, 2012  
Code tables added  
Cresta, UPM added
- Version 2.7 – March 15, 2012  
Flash procedure updated
- Version 2.8 – March 31, 2012  
Phenix table added
- Version 2.9 – March 31, 2012  
AB400 and Phenix address extended
- Version 2.10 – April 16, 2012  
Linux USB - tty configuration updated
- Version 2.11 – May 14, 2012  
List of supported protocols updated.
- Version 2.12 – June 8, 2012  
Chapter added how to run RFXmngn or RFXflash on Mac OS
- Version 2.13 – July 15, 2012  
List of supported protocols updated
- Version 2.14 – August 4, 2012  
List of enabled protocols influence added  
RFXtrx315 added
- Version 2.15 – August 18, 2012  
Enabled protocols table changed
- Version 2.16 – August 26, 2012  
Rubicon stektermometer added  
ATI Remote Wonder II added
- Version 2.17 – August 28, 2012  
Table “sensitivity influenced” updated
- Version 2.18 – September 18, 2012  
Chapter 2.3 updated: BlindsT0 disables all other protocols
- Version 2.19 – September 25, 2012  
RFXFlash version required changed to 4.0.0.0
- Version 2.20 – September 28, 2012  
RF range reduction guide added
- Version 2.21 – October 18, 2012  
BlindsT2 and BlindsT3 added
- Version 2.22 – October 24, 2012  
Sartano added
- Version 2.23 – October 31, 2012

Sensitivity table updated

Version 2.24 – November 7, 2012  
 Protocol table extended with the protocols to enable for receive

Version 2.25 – November 14, 2012  
 HE105 switch settings added

Version 2.26 – November 28, 2012  
 undec on explained

Version 2.27 – December 4, 2012  
 Use of Lighting4 commands for undec ARC  
 Brennenstuhl added

Version 2.28 – December 18, 2012  
 Receiver tab removed from RFXmngnr

Version 2.29 – December 27, 2012  
 Lighting4 receive added

Version 2.30 – January 1, 2013  
 Raex motor added

Version 3.00 – January 4, 2013  
 RFXtrx433 Type1/Type2 firmware added

Version 3.01 – February 4, 2013  
 Supported protocols list updated

Version 4.00 – February 21, 2013  
 Chapter 8 - Lighting4 screen updated for RFXmngnr 11.0.0.0  
 Known Lighting4 chapter added

Version 4.01 – March 13, 2013  
 Receive of LaCrosse sometimes influenced by enabled Hideki

Version 4.02 – June 8, 2013  
 MDREMOTE LED dimmer added  
 Conrad RSL2 added  
 Energenie added

Version 4.03 – September 27, 2013  
 How to find the MDREMOTE ID (chapter 7.6)  
 WS1200 added  
 Byron SX Chime added

Version 4.04 – November 15, 2013  
 Maverick ET-732 added  
 Alecto SA30 added  
 Oregon EW109 added  
 Revolt added

Version 4.05 – December 5, 2013  
 Blyss command explanation added.  
 Lighting4 - Mercury added  
 Lighting5 – dx.com RGB LED controller added

Version 4.06 – December 27, 2013  
 Chapter 2.2 updated

Version 4.07 – February 10, 2014  
 Chapter 7.8 added: how to find the dx.com RGB LED strip driver ID

Version 4.08 – March 20, 2014  
 ARC and Oregon3.0 updated in table 2.4.  
 Energenie 5-gang 429.950 added

Version 4.09 – April 4, 2014  
 BlindsT6 - DC106, YOODA, Röhmotor24 RMF added

Version 4.10 – April 7, 2014  
 BlindsT7 - Forest added

Version 4.11 – April 28, 2014  
 RGB LED – clarified AD is LightwaveRF

Version 4.12 – May 21, 2014  
 Kambrook RF3672 added  
 RFY protocol added

Somfy programming instructions added  
 Supported protocol list RFXtrx433 updated.  
 Protocol list by function added  
 Version 4.13 – May 31, 2014  
   Opus TX300/Imagintronix Soil sensor added  
 Version 4.14 – June 18, 2014  
   Prega sensor added  
   Conrad 34911 Lighting4 coding added  
 Version 4.15 – June 25, 2014  
   Kambrook, Rubicson, Viking supported in ext firmware  
   Number of RFY remotes increased from 16 to 30  
 Version 4.16 – June 29, 2014  
   RFXmngn cannot be used on Linux  
 Version 4.17 – July 3, 2014  
   CoCo GDR2 added  
 Version 4.18 – July 14, 2014  
   Opus TX300 link added  
 Version 4.19 – July 25, 2014  
   Aoke relay added  
 Version 4.20 – August 25, 2014  
   Enabling protocols clarified.  
 Version 4.21 – September 5, 2014  
   Meade sensors added  
   Oregon BTHGN129 sensor added  
 Version 4.22 – September 18, 2014  
   Eurodomest added (NL - Action)  
   Byron MP001 added  
   WT0122 added  
   Procedures added to find the Eurodomest and TRC02 ver2 ID  
 Version 4.23 – September 24, 2014  
   Proove TSS330 fridge/freezer sensor added  
 Version 4.24 – October 9, 2014  
   BlindsT0 added in ext firmware  
   Alecto WS1700 and compatibles added  
 Version 4.25 – December 13, 2014  
   Smartwares radiator valve added  
   Proove TSS320 sensor added  
 Version 4.26 – January 2, 2015  
   SelectPlus200689101 White Chime (Action NL) added  
 Version 4.27 – January 6, 2015  
   SelectPlus200689103 Black Chime (Action NL) added  
 Version 4.28 – January 7, 2015  
   Proove outdoor sensors 311346 & 311501 added  
   Etekcity Wireless Remote Control Outlet Switch (US)  
 Version 5.00 – January 10, 2015  
   Copyright message updated  
   License chapter added  
   RFXmngn information updated  
 Version 5.01 – February 27, 2015  
   Chapter 2.5 Lighting4 receive is reduced with HomeEasy EU enabled.  
   Chamberlain tubular motor added  
   Sunpery blind motors added  
   DEA Systems receivers added  
   Envivo ENV-1348 chime added  
   Alecto WS4500 added

Version 5.02 – March 18, 2015  
1byOne Easy Chime added  
BTX blind motors added  
Dolat DLM-1 blind motors added  
OTIO added

Version 5.03 – March 19, 2015  
TFA 30.3160 pool sensor added

Version 5.04 – April 14, 2015  
Chapter 4 updated with restrictions on Lighting4  
Siemens SF01 LF959RA50/LF259RB50/LF959RB50 extractor hood added  
Maplin N78KA added

Version 5.05 – May 2, 2015  
Dooya blind motors added  
Louvolute one touch motorised blinds added  
Alecto WS3500 added

Version 5.06 – May 4, 2015  
Current dx.com TRC02 LED drivers have a different protocol and are not supported.

Version 5.07 – June 1, 2015  
WH2 temperature humidity sensor added  
RGB LED controller <http://www.ebay.com/itm/191481664563> (maybe dx.com 227892)

Version 5.08 – July 31, 2015  
Oregon MSR939 added  
ESMO blind motors added  
Brel blind motors added  
Blinds T6 type motors now also supported in Ext firmware  
Supported devices table 2.2.2. updated

Version 5.09 – Aug 12, 2015  
Luxaflex blind motors added

Version 5.10 – Aug 17, 2015  
JVS screen motors added  
Livolo NL link added